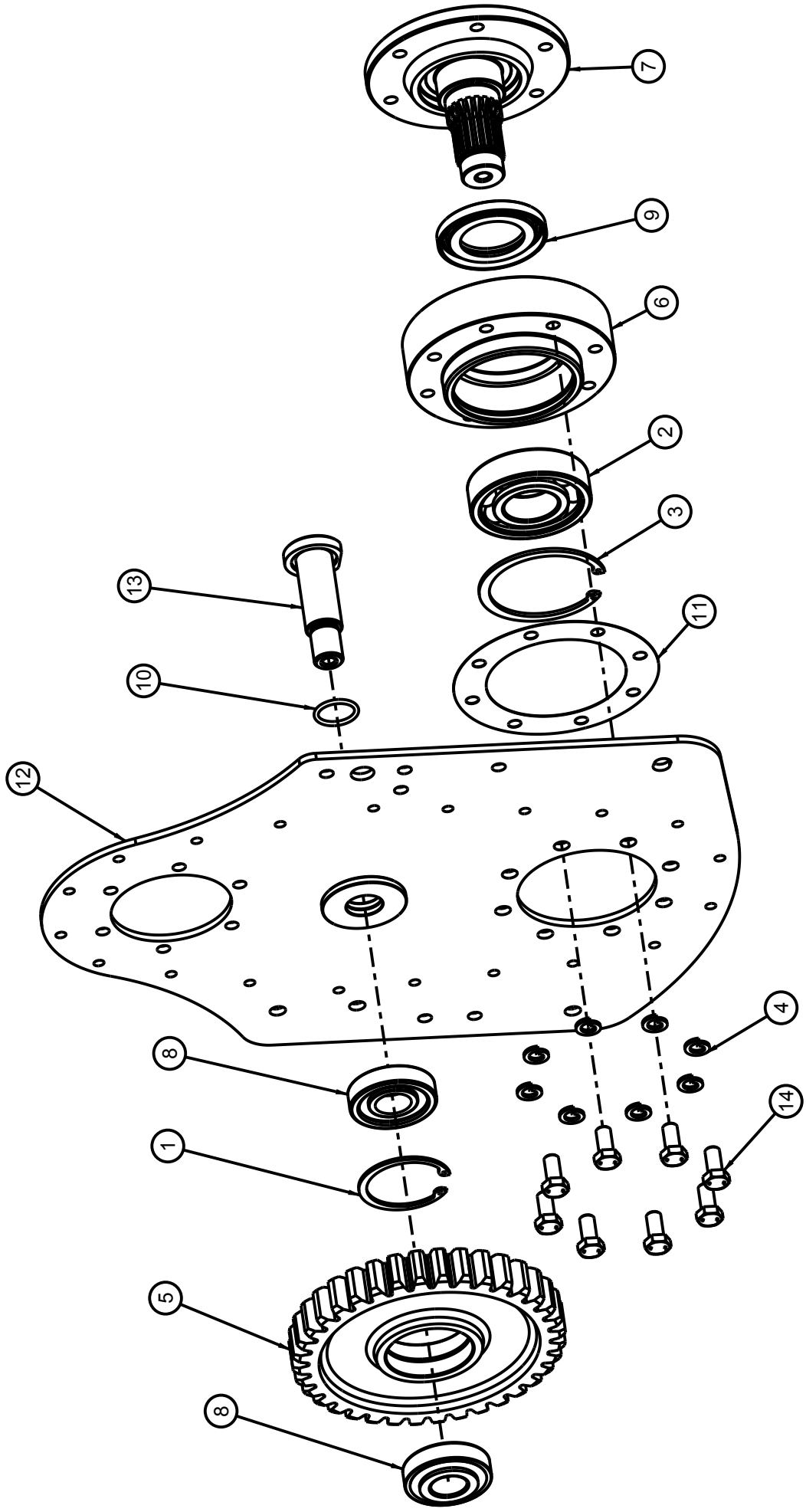


**PARTS MANUAL**

**UM SERIES ROTARY TILLER**



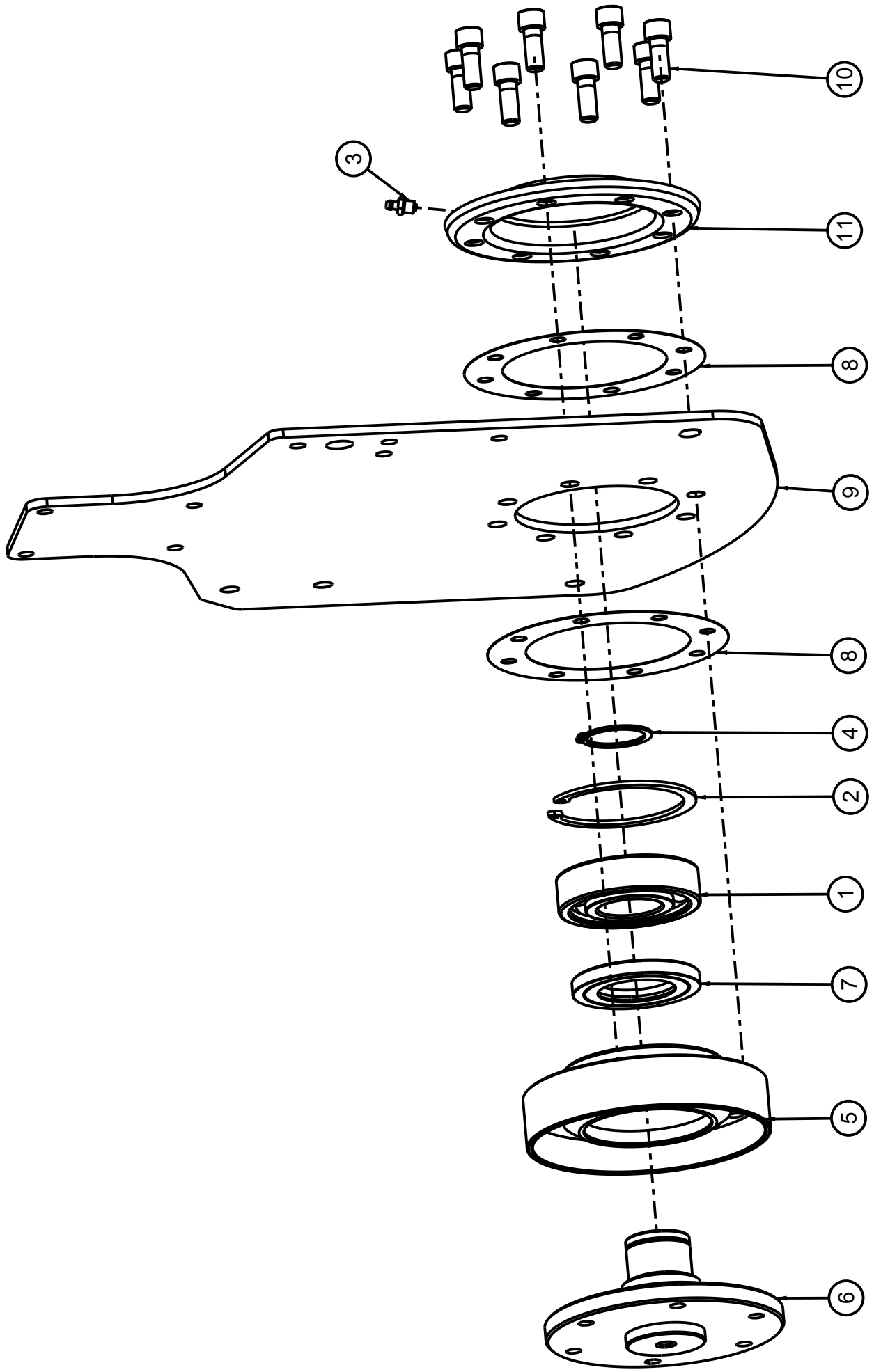
# R D PLATE ASSEMBLY (UM-SERIES)



**RD PLATE ASSEMBLY (UM) SPARE PARTS LIST**

<b>ITEM</b>	<b>P/NUMBER</b>	<b>QTY.</b>	<b>PART NAME</b>
1	1002	1	CIRCLIP INTERNAL 72mm
2	1073	1	BEARING 6309 LU
3	1074	1	CIRCLIP INTERNAL 100MM
4	1306	8	SPRING WASHER 12mm
5	14109	1	GEAR 36 TEETH (U/M-SERIES)
6	14114	1	RD SHAFT HOUSING GEAR SIDE (U/M-SERIES)
7	14115	1	RD SHAFT GEAR SIDE (U/M-SERIES)
8	14127	2	BEARING 30306
9	14122	1	OIL SEAL 55 x 90 x 10
10	14131	1	O RING 30 x 3.50
11	14135	1	R D HOUSING GASKET (U/M-SERIES)
12	14094	1	R D PLATE GD COMP (U/M-SERIES)
13	14096	1	R D SHAFT MIDDLE (U/M-SERIES)
14	17474	8	HEX BOLT M12 X 1.75 X 25(FT)(8.8) DIN933

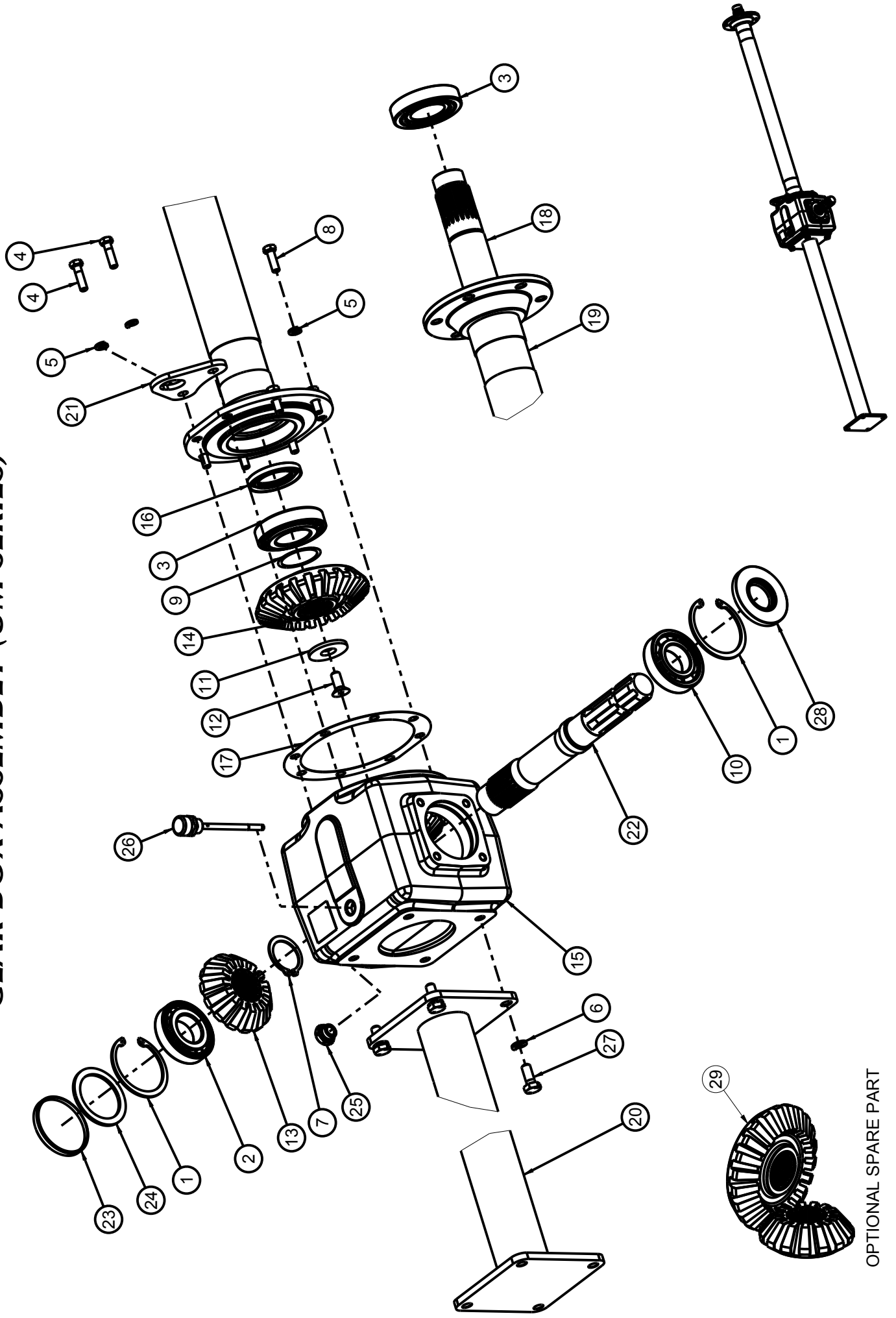
# ***S D PLATE ASSEMBLY (UM-SERIES)***



# S D ASSEMBLY SPARE PARTS LIST

ITEM	P/NUMBER	QTY.	PART NAME
1	14023	1	S D PLATE (U-SERIES)
2	14019	1	ROTOR SHAFT HOUSING (U-SERIES)
3	14021	1	STUB AXLE SHAFT (U-SERIES)
4	14051	1	OIL SEAL 55 X 72 X 10
5	8036	1	BEARING 6308
6	8027	1	CIRCLIP EXTERNAL 40MM
7	3027	1	CIRCLIP INTERNAL 90MM
8	14256	1	SD PLATE END COVER COMP. (U-SERIES)
9	2833	6	ALLEN BOLT M10 X 1.50 X 25
10	1253	1	1/8 BSP GREASE NIPPLE 7.5MM
11	14018	2	S D PLATE END COVER GASKET (U-SERIES)

# GEAR BOX ASSEMBLY (UM-SERIES)

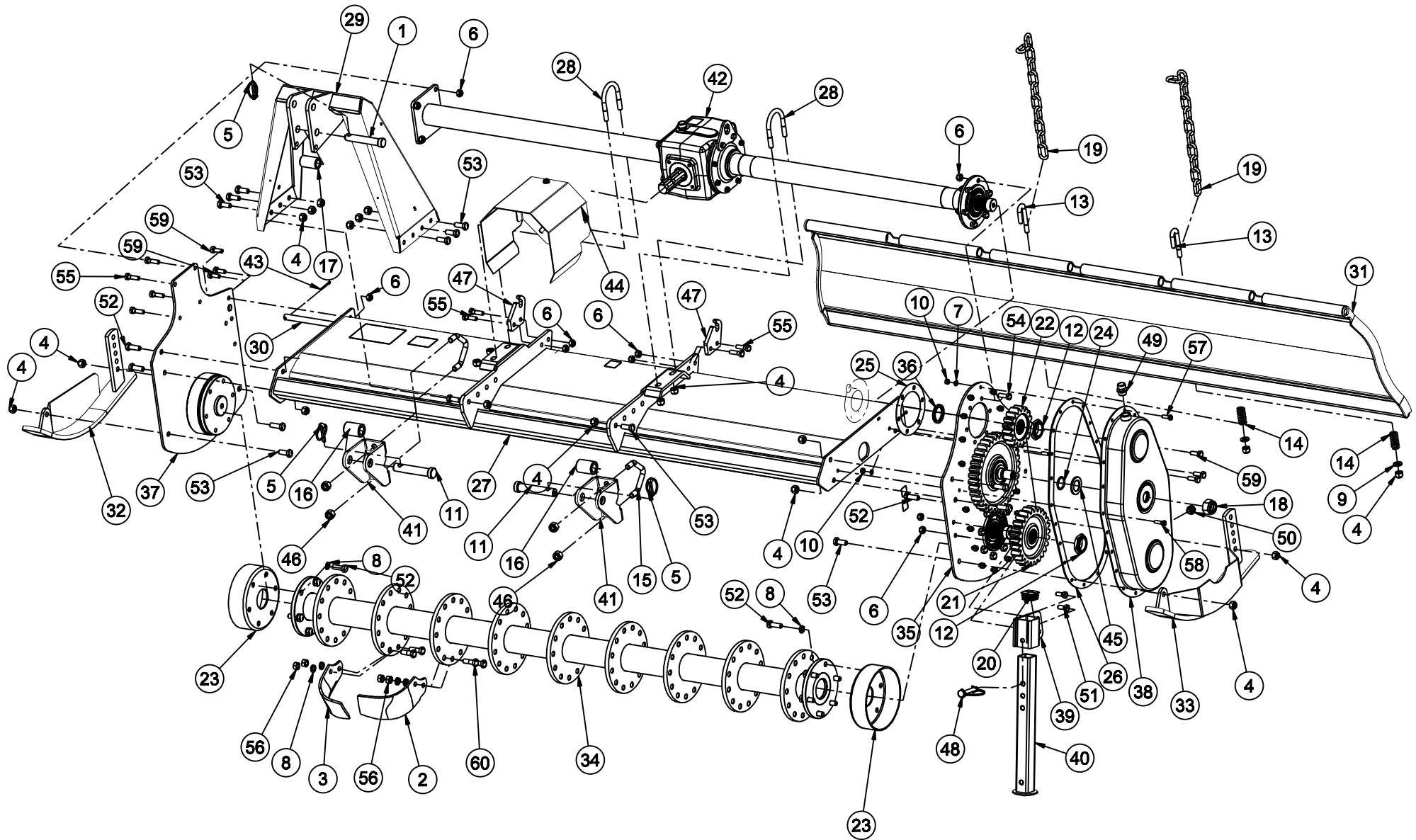


OPTIONAL SPARE PART

## GEAR BOX ASSEMBLY SPARE PARTS LIST

ITEM	P/NUMBER	QTY.	PART NAME	REMARKS
1	1002	2	CIRCLIP INTERNAL 72mm	
2	1003	1	BEARING 30207	
3	1022	2	BEARING 30208	
4	6072	2	HEX BOLT M8 X 1.25 X 30	
5	1303	8	SPRING WASHER 8mm	
6	1304	4	SPRING WASHER 10mm	
7	8027	1	CIRCLIP EXTERNAL 40MM	
8	8171	6	HEX BOLT M8 X 1.25 X 25	
9	1426	1	SIMS (DIA 50 X 42)(0.20MM)	
10	10143	1	BEARING 6207	
11	14049	1	CROWN WASHER (U-SERIES)	
12	14058	1	CSK BOLT M10 X 1.5 X 25	
13	14112	1	PINION 15 TEETH (U/M-SERIES)	
14	14113	1	CROWN 22 TEETH (U/M-SERIES)	
15	14118	1	GEAR BOX (U/M-SERIES)	
16	14121	1	OIL SEAL 40 x 62 x 7	
17	14132	2	HOU FLANGE BIG GASKET (U/M-SERIES) 0.4MM	
18	14082	1	JACK SHAFT 946MM (U/M-SERIES)	UM 1.8
	14240	1	JACK SHAFT 848mm (U/M-SERIES)	UM 1.5
	14345	1	JACK SHAFT 705MM (U/M-SERIES)	UM 1.35
19	14083	1	J/S HOUSING COMP (J-946) (U/M-SERIES)	UM 1.8
	14244	1	J/S HOUSING COMP (J-848) (U/M-SERIES)	UM 1.5
	14343	1	J/S HOUSING COMP (J-705) (U/M-1.35M/540)	UM 1.35
20	14084	1	FULL HOUSING COMP (J-944) (U/M-1.8M/540)	UM 1.8
	14245	1	FULL HOUSING COMP.(J-848) (U/M-1.5M/540)	UM 1.5
	14344	1	FULL HOUSING COMP (J-705)(U/M-1.35M/540)	UM 1.35
21	14085	1	GEAR BOX LIFTING HOOK (U/M-SERIES)	
22	14106	1	INPUT SHAFT 540 (U/M-SERIES)	
23	14119	1	OIL SEAL 72 x 8	
24	14120	1	SPACER 71.50 x 56 x 3	
25	14312	1	DRAIN CAP 3/8" BSP (1GTC02UW)	
26	14316	1	DIPSTICK 106MM (M16 X 1.5) (1MLSR202)	
27	17270	4	HEX BOLT M10 X 1.50 X 25 (8.8) DIN931	
28	14309	1	OIL SEAL 35 X 72 X 8 (SPECIAL)	
29	14369	1	CROWN T22,PINION T15 PAIR (U/M-SERIES)	OPTIONAL PART

# MACHINE ASSEMBLY (UM-SERIES)

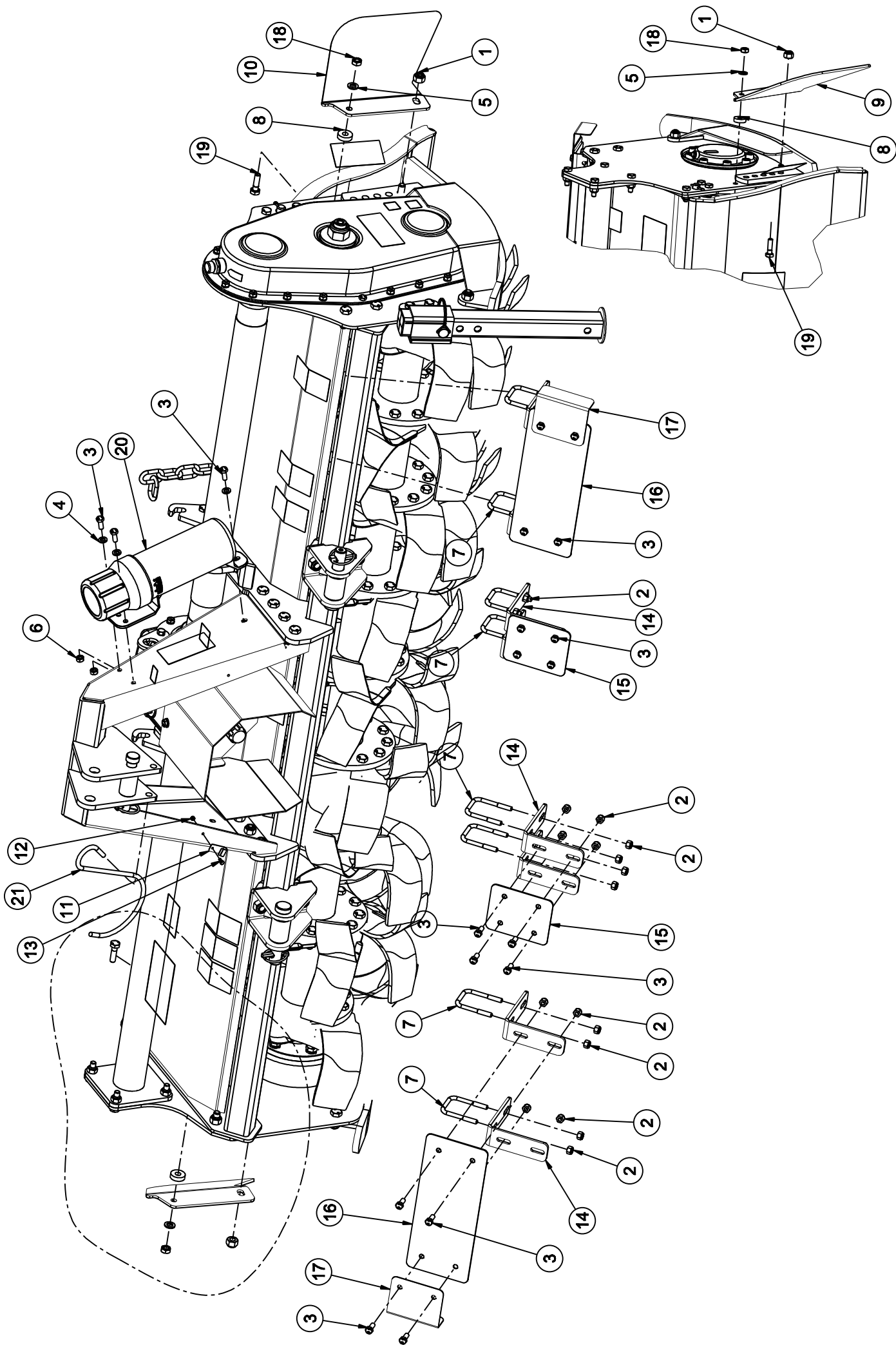


## MACHINE ASSEMBLY (UM) SPARE PARTS LIST

ITEM	P/NUMBER	QTY.	PART NAME	REMARKS
1	1214	1	HINCH PIN TOP CAT-I (DIA- 19 X 126)	
2	4724	27	BLADE C - TYPE RH (70X7) (REG)	UM-1.8
		24		UM-1.5
		21		UM-1.35
3	4723	27	BLADE C - TYPE LH (70X7) (REG)	UM-1.8
		24		UM-1.5
		21		UM-1.35
4	1209	30	NYLOCK NUT M12X1.75 (DIN-982)	
5	1218	3	LINCH PIN	
6	1298	22	NYLOCK NUT M10X1.50 (DIN-982)	
7	1303	20	SPRING WASHER 8mm	
8	14339	120	SPRING WASHER 12 MM ASME B18.21.1	UM-1.8
		108		UM-1.5
		96		UM-1.35
9	8126	2	PLAIN WASHER 12mm	
10	8181	20	HEX NUT M8 X 1.25	
11	1216	2	HITCH PIN BOTTOM CAT-I (DIA-22 X 129)	
12	1449	2	NYLOCK NUT M35X1.50	
13	14004	2	J-BOLT M12 x 1.75 x 24 x 87.5 x 25TL	
14	14005	2	U-BOLT SPRING (U-SERIES)	
15	14014	2	V-BOLT M14 x 2 x 90 x 83.2 x 26TL	
16	14016	2	BUSH (DIA. 36.5 X 22.5 X 50 L)	
17	14038	1	BUSH (DIA. 19.5 X 31.5 X 52 L)	
18	14065	1	NYLOCK NUT M24X2.00 (DIN-982)	
19	14073	2	LIFTING CHAIN TB	
20	4657	1	SQ. PIPE PLASTIC CAP 40MM	
21	14110	1	GEAR 26 TEETH (U/M-SERIES)	
22	14111	1	GEAR 17 TEETH (U/M-SERIES)	
23	14130	2	DUST COVER (U/M-SERIES)	
24	14131	1	O RING 30 x 3.50	
25	14134	1	HOUSING FLANGE SMALL GASKET (U/M-SERIES)	
26	14136	1	CHAIN COVER GASKET (U/M-SERIES)	
27	14080	1	HULL COMP 1.8M (U/M-SERIES)	UM-1.8
	14242	1	HULL COMP 1.5M (U/M-SERIES)	UM-1.5
	14342	1	HULL COMP 1.35M (U/M-SERIES)	UM-1.35
28	14081	2	U-BOLT M12 X 1.75 X 73 X 99.5 X 32TL	
29	14087	1	TOP MAST COMP (U/M-SERIES)	
30	14088	1	TRAILING BOARD ROD 1.8M(U/M-SERIES)	UM-1.8
	14241	1	TRAILING BOARD ROD 1.5M (U/M-SERIES)	UM-1.5
	14349	1	TRAILING BOARD ROD 1.35M(U/M-SERIES)	UM-1.35

31	14089	1	TRAILING BOARD COMP 1.8M (U/M-SERIES)	UM-1.8
	14247	1	TRAILING BOARD COMP 1.5M (U/M-SERIES)	UM-1.5
	14348	1	TRAILING BOARD COMP 1.35M (U/M-SERIES)	UM-1.35
32	14090	1	DEPTH SKID COMP RH (U/M-SERIES)	
33	14091	1	DEPTH SKID COMP LH (U/M-SERIES)	
34	14092	1	ROTOR COMP 1.8M (U/M-SERIES)	UM-1.8
	14246	1	ROTOR COMP 1.5M (U/M-SERIES)	UM-1.5
	14347	1	ROTOR COMP 1.35M (U/M-SERIES)	UM-1.35
35	14095	1	R D PLATE ASSEMBLY (U/M-SERIES)	
36	14098	1	SPACER DIA-52 x 40.15 x 5.5 MM	
37	14101	1	S D PLATE ASSEMBLY (U/M-SERIES)	
38	14103	1	CHAIN COVER GD COMP (U/M-SERIES)	
39	14104	1	SIDE STAND OUTER COMP (U/M-SERIES)	
40	14105	1	SIDE STAND INNER COMP (U/M-SERIES)	
41	14107	1	HITCHING BRACKET COMP (U/M-SERIES)	
42	14108	1	GEAR BOX ASSEMBLY (U/M-SERIES)(1.8M/540)	UM-1.8
	14243	1	GEAR BOX ASSEMBLY (U/M-SERIES)(1.5M/540)	UM-1.5
	14346	1	GEAR BOX ASSEMBLY(U/M-SERIES)(1.35M/540)	UM-1.35
43	19018	2	COTTER PIN (DIA 4 X 35)	
44	1547	1	PTO SHAFT GUARD ASSEMBLY	
45	14161	1	SPACER 30x50x4	
46	1574	4	NYLOCK NUT M14X2.00 (DIN-982)	
47	14259	2	CHAIN LIFTING HOOK (UM-SERIES)	
48	14267	1	SQ. SNAPPER PIN D10 X L70	
49	14310	1	AIR BREATHER 1/2" BSP (1GTSR38)	
50	14314	1	OIL LEVEL GAUGE-3/8" BSP (1GTLA210)	
51	17270	2	HEX BOLT M10 X 1.50 X 25 (8.8) DIN931	
52	17274	18	HEX BOLT M12 X 1.75 X 35 (8.8) DIN931	
53	17275	10	HEX BOLT M12 X 1.75 X 30 (8.8) DIN931	
54	3340	6	HEX BOLT M10 X 1.50 X 30 (8.8) DIN933	
55	3345	8	HEX BOLT M10 X 1.50 X 35 (8.8) DIN931	
56	14336	108	HEX NUT M12 X 1.25 (10.9) DIN 934	UM-1.8
		96		UM-1.5
		84		UM-1.35
57	14321	18	HEX BOLT M8 X 1.25 X 23 (8.8)(HT)	
58	14322	2	HEX BOLT M8 X 1.25 X 28 (8.8)(HT)	
59	14323	6	HEX BOLT M10 X 1.50 X 28 (8.8) DIN931	
60	4822	108	HEX BOLT M12 X 1.25 X 35(HT-10.9)DIN 960	UM-1.8
		96		UM-1.5
		84		UM-1.35

# "CE" KIT ASSEMBLY (UM-SERIES)



# CE KIT ASSEMBLY (UM) SPARE PARTS LIST

ITEM	P/NUMBER	QTY.	PART NAME	REMARKS
1	1209	2	NYLOCK NUT M12X1.75 (DIN-982)	SKID NUT
2	1297	32	NYLOCK NUT M8X1.25 (DIN-982)	FOR UM-1.8
		16		FOR UM-1.5
				FOR UM-1.35
3	8040	19	HEX BOLT M8 X 1.25 X 20	FOR UM-1.8
		11		FOR UM-1.5
		11		FOR UM-1.35
4	8064	3	PLAIN WASHER 8mm	
5	8078	2	PLAIN WASHER 10mm	
6	8181	3	HEX NUT M8 X 1.25	
7	14190	8	U-BOLT M8 X 1.25 X 77 X 60 X 28TL	FOR UM-1.8
		4		FOR UM-1.5
		4		FOR UM-1.35
8	14194	2	SPACER DIA-28 x 11 x 8 MM	
9	14228	1	TB GAURD PLATE LH (UM-SERIES)	
10	14229	1	TB GAURD PLATE RH (UM-SERIES)	
11	23147	1	PLATE,HOOK HOLDING (JUMBO)	
12	23028	1	HEX NUT M4 X 0.75	
13	23029	1	HEX BOLT M4 X 0.75 X 10	
14	4731	8	BRACKET,FRONT BARRIER (REG + & L)	FOR UM-1.8
		4		FOR UM-1.5
		4		FOR UM-1.35
15	4739	2	PLATE,FRONT BARRIER (L=100) (REG +)	ONLY FOR UM-1.8
16	4740	2	PLATE,FRONT BARRIER (L=300) (REG +)	FOR UM-1.8 & UM-1.5
	14350	2	PLATE,FRONT BARRIER (L=150) (U/M SERIES)	FOR UM-1.35
17	4741	2	PLATE,END,FRONT BARRIER (REG +)	
18	17272	2	HEX NUT M10 X 1.50 DIN 934	
19	3345	2	HEX BOLT M10 X 1.50 X 35 (8.8) DIN931	
20	26030	1	MANUAL BOX COVER 1/2(SMMSD)	
21	14340	1	DRIVELINE HOOK 250MM	