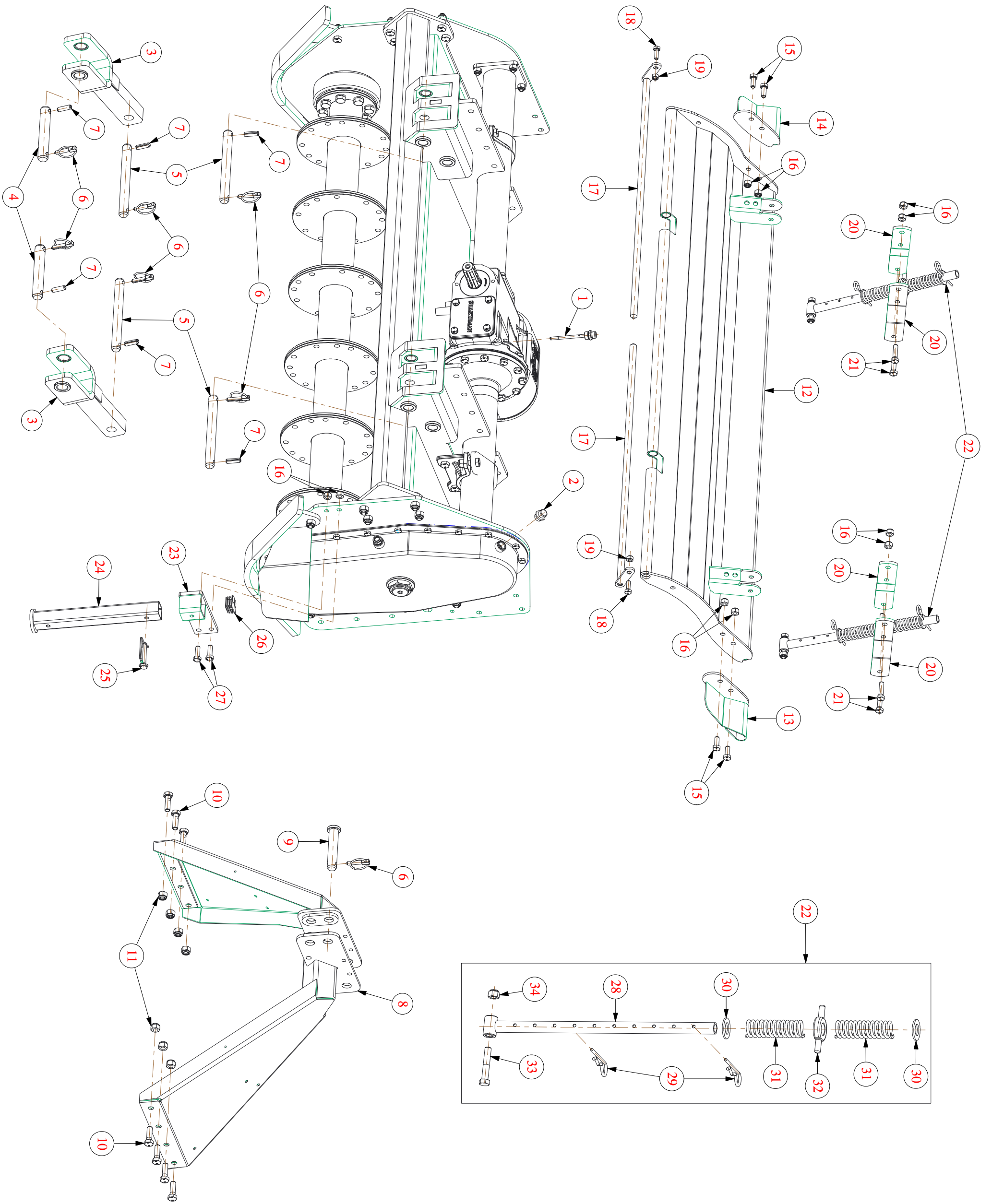


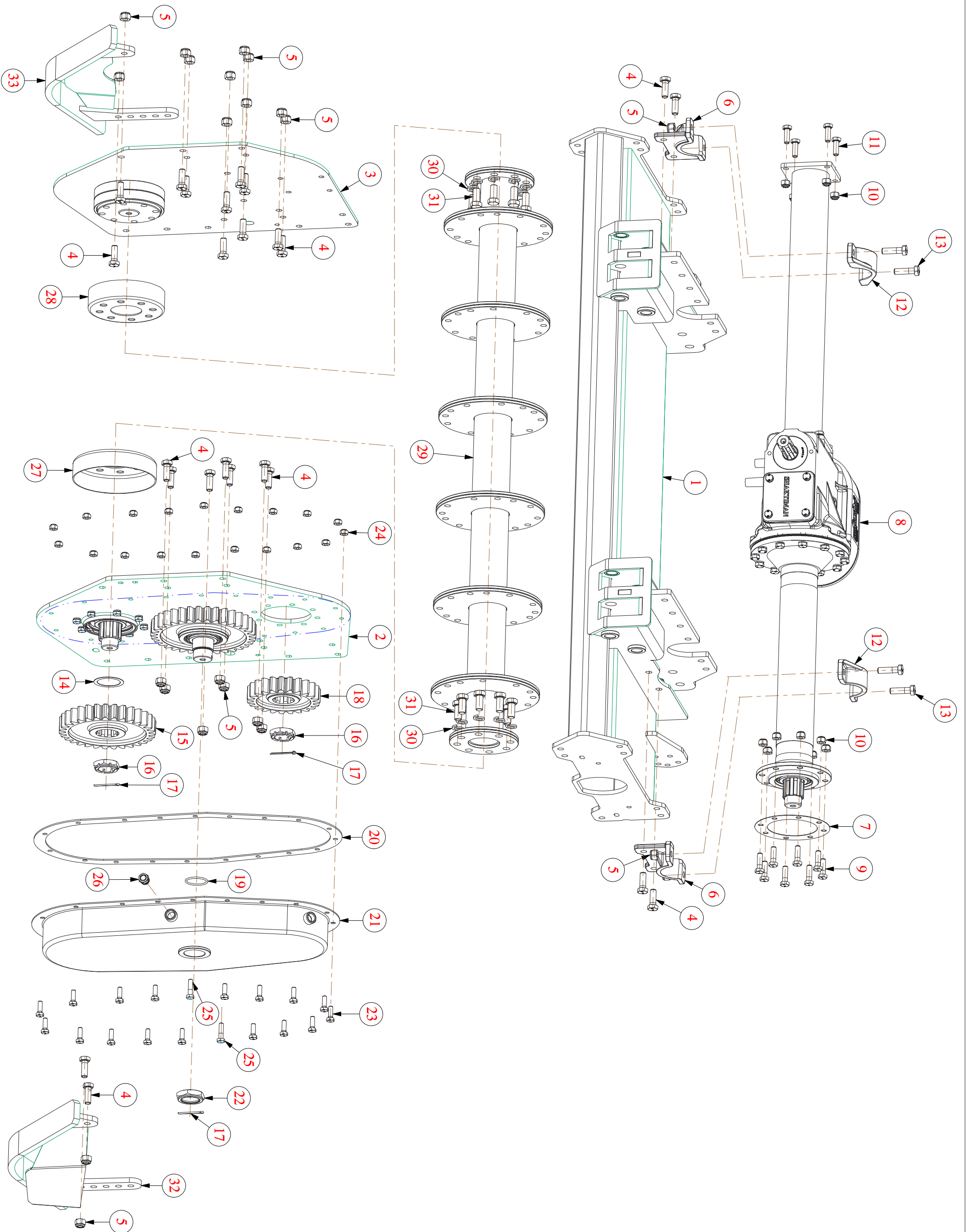
PARTS MANUAL
VICTOR SERIES

ACCESSORIES PARTS



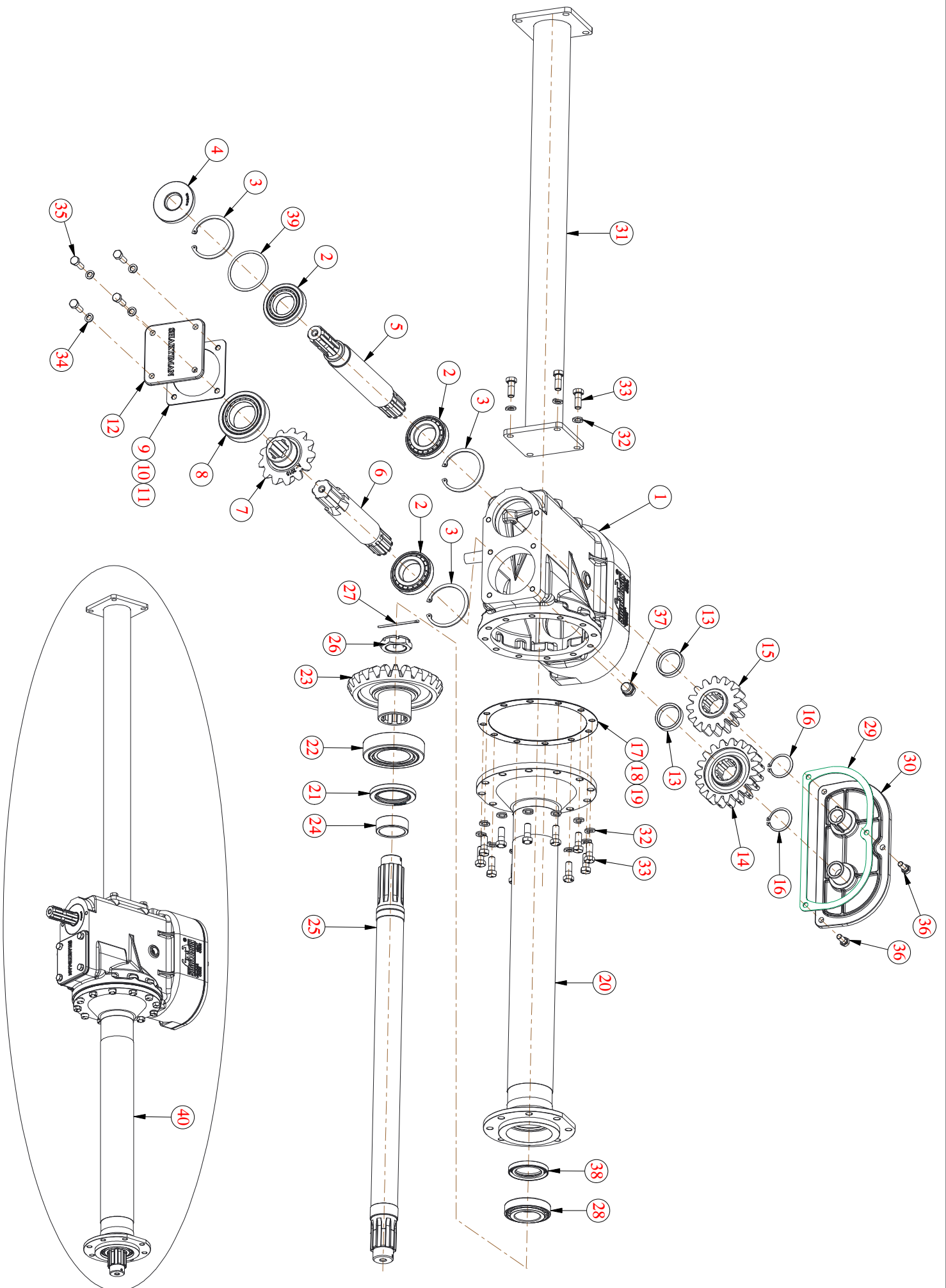
Accessories Parts			
SR NO	MANUAL CODE	MATERIAL DESCRIPTION	QTY
1	3330	DIPSTICK 87MM (1/2" BSP)	1
2	14310	AIR BREATHER 1/2" BSP (1GTSR38)	1
3	23083	CLEVIS, LOWER HITCH (CATEGORY II)(JUMBO)	2
4	23103	PIN,LOWER HITCH (CATEGORY II) (JUMBO)	2
5	23105	PIN,LOWER HITCH ATTACHMENT (JUMBO)	4
6	23062	LINCH PIN (D10XL45)	7
7	23067	SPRING PIN D12X40	6
8	3282	TOP MAST WELDMENT (VICTOR)	1
9	23104	PIN,TOP HITCH (CATEGORY II) (JUMBO)	1
10	3339	HEX BOLT M14 X 1.50 X 45 (8.8) DIN931	8
11	1302	NYLOCK NUT M14X1.50 (DIN-982)	8
12	3310	REAR BOARD 150 (VICTOR)	1
	3285	REAR BOARD 175 (VICTOR)	1
	3296	REAR BOARD 200 (VICTOR)	1
	3302	REAR BOARD 225 (VICTOR)	1
13	3286	EXTENSION REAR BOARD TR. SIDE (VICTOR)	1
14	3287	EXTENSION REAR BOARD EX. SIDE (VICTOR)	1
15	17275	HEX BOLT M12 X 1.75 X 30 (8.8) DIN931	4
16	1209	NYLOCK NUT M12X1.75 (DIN-982)	10
17	3311	ROD REAR BOARD WELDMENT 150 (VICTOR)	2
	3289	ROD REAR BOARD WELDMENT 175 (VICTOR)	2
	3297	ROD REAR BOARD WELDMENT 200 (VICTOR)	2
	3303	ROD REAR BOARD WELDMENT 225 (VICTOR)	2
18	3340	HEX BOLT M10 X 1.50 X 30 (8.8) DIN933	2
19	1298	NYLOCK NUT M10X1.50 (DIN-982)	2
20	3291	BRACKET SPRING ADJ. SUPPORT (VICTOR)	4
21	3338	HEX BOLT M12 X 1.75 X 45 (8.8) DIN933	4
22	2302	DAMPER SPRING ASSY (SEMI +)	2
23	4787	SIDE STAND OUTER COMPLETE (REG L) NEW	1
24	4788	SIDE STAND COMPLETE (REG L) NEW	1
25	2364	SNAPPER PIN (SQ.) D9.5 X L70	1
26	4657	SQ. PIPE PLASTIC CAP 40MM	1
27	17274	HEX BOLT M12 X 1.75 X 35 (8.8) DIN931	2
28	2303	DAMPER SPRING ROD COMP (SEMI +)	1
29	23068	R-CLIP D5 X L100 MM	2
30	2304	DAMPER SPRING WASHER (SEMI +)	2
31	2305	DAMPER SPRING (SEMI +)	2
32	2306	DAMPER SPRING COLLER (SEMI +)	1
33	2203	HEX BOLT M12 X 1.75 X 65	1
34	1209	NYLOCK NUT M12X1.75 (DIN-982)	1

MACHINE PARTS



Machine Parts			
SR NO	MANUAL CODE	MATERIAL DESCRIPTION	QTY
1	3306	FRAME WELDMENT 150 (VICTOR)	1
	3268	FRAME WELDMENT 175 (VICTOR)	1
	3292	FRAME WELDMENT 200 (VICTOR)	1
	3298	FRAME WELDMENT 225 (VICTOR)	1
2	3411	TILLER END PLATE TR. SIDE ASM(VICTOR)SR	1
3	3273	TILLER END PLATE EX. SIDE ASM (VICTOR)	1
4	3341	HEX BOLT M14 X 1.50 X 40 (8.8) DIN933	24
5	1302	NYLOCK NUT M14X1.50 (DIN-982)	28
6	2232	JACK SHAFT HOUSING CLAMP BOTTOM (DIA 89)	2
7	2063	HOUSING FLANGE SMALL GASKET (CHA)	1
8	3307	GEAR BOX ASSY 150 (VICTOR)	1
	3275	GEAR BOX ASSY 175 (VICTOR)	1
	3293	GEAR BOX ASSY 200 (VICTOR)	1
	3299	GEAR BOX ASSY 225 (VICTOR)	1
9	17433	HEX BOLT M12 X 1.75 X 40(HT)(8.8) DIN931	8
10	1209	NYLOCK NUT M12X1.75 (DIN-982)	12
11	17274	HEX BOLT M12 X 1.75 X 35 (8.8) DIN933	4
12	2231	JACK SHAFT HOUSING CLAMP TOP (DIA 89)	2
13	23384	HEX BOLT M14 X 1.50 X 55 (8.8) DIN931	4
14	3348	SIMS (DIA 72 X 55)(1.00MM)	1
15	3406	GEAR 31 TEETH (CHA) (SPLINE ROLLING)	1
16	1093	CASTLE NUT 40MM	2
17	14137	COTTER PIN (DIA 4 X 70)	3
18	3019	GEAR 23 TEETH SIDE GEAR (CHA)	1
19	20351	'O' RING ID-47.2 MM X W-3.5 MM-SCH	1
20	3006	CHAIN COVER GASKET (CHA)	1
21	3279	COVER WELDMENT GD SIDE (VICTOR)	1
22	23065	NYLOCK NUT M45 X 1.5	1
23	3340	HEX BOLT M10 X 1.50 X 30 (8.8) DIN933	17
24	1298	NYLOCK NUT M10X1.50 (DIN-982)	19
25	3342	HEX BOLT M10 X 1.50 X 40 (8.8) DIN931	2
26	23251	OIL LEVAL KNOB TYPE 1/2 BSP	1
27	1119	DUST COVER BIG	1
28	1087	DUST COVER SMALL	1
29	3309	ROTOR WELDMENT OUTWARD 150 (VICTOR)	1
	3281	ROTOR WELDMENT OUTWARD 175 (VICTOR)	1
	3295	ROTOR WELDMENT OUTWARD 200 (VICTOR)	1
	3301	ROTOR WELDMENT OUTWARD 225 (VICTOR)	1
30	1308	SPRING WASHER 16MM	16
31	1163	HEX BOLT M16 X 1.50 X 35 (FT)(10.9)	16
32	3283	SKID WELDMENT TR. SIDE (VICTOR)	1
33	3284	SKID WELDMENT EX. SIDE (VICTOR)	1

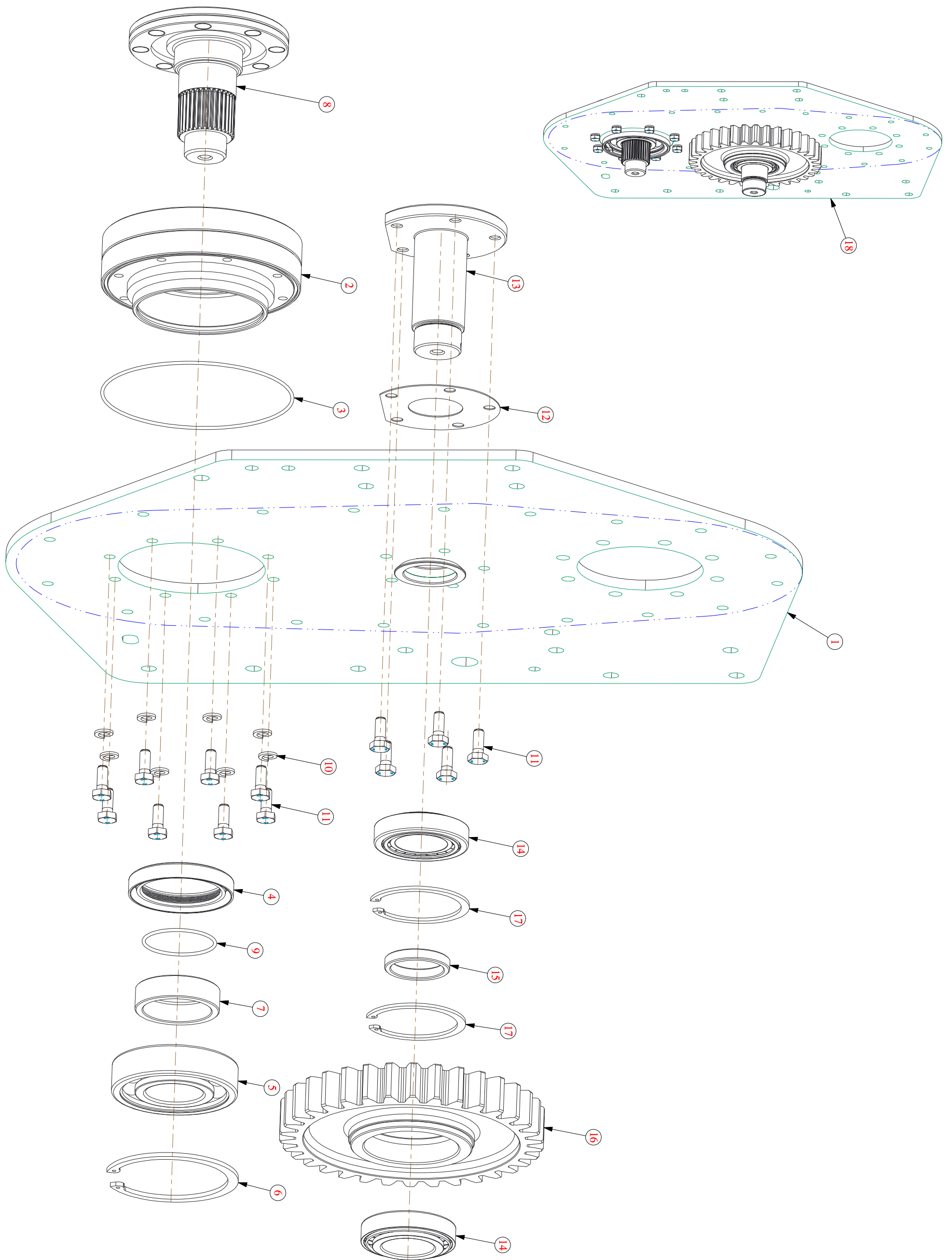
GEAR BOX PARTS (MULTI SPEED)



GEAR BOX PARTS (MULTI SPEED)			
SR NO	MANUAL CODE	MATERIAL DESCRIPTION	QTY
1	3332	GEAR BOX 1000 RPM (CHA) UPGRADED	1
2	1045	BEARING 30209	3
3	1049	CIRCLIP INTERNAL 85mm	3
4	1448	OIL SEAL 35 X 85 X 10	1
5	2043	INPUT SHAFT 1000 RPM(CHA)	1
6	2061	INTER. SHAFT (CHA)	1
7	2005	PINION 13 TEETH (CHA)	1
8	1030	BEARING 32211	1
9	2012	INTER. SHAFT PLATE GASKET (CHA)0.4 mm	1
10	2106	INTER. SHAFT PLATE GASKET (CHA)0.8 mm	1
11	2107	INTER. SHAFT PLATE GASKET (CHA)1.5 mm	1
12	3097	SHAKTIMAN BACK PLATE SMALL (CHA)NEW	1
13	2101	SPUR GEAR SPACER (CHA)	2
14	2051	GEAR 18 TEETH (CHA)	1
	2052	GEAR 19 TEETH (CHA)	1
15	2050	GEAR 17 TEETH (CHA)	1
	2049	GEAR 16 TEETH (CHA)	1
16	2089	CIRCLIP EXTERNAL 45MM	2
17	2018	HOUSING FLANGE BIG GASKET (CHA) 0.4MM	1
18	2104	HOUSING FLANGE BIG GASKET (CHA) 0.8MM	1
19	2105	HOUSING FLANGE BIG GASKET (CHA) 1.5MM	1
20	3388	J/S HSG. SRT-5 (EL-574MM) (CHA)	SRT-150 = 1
	3401	J/S HSG. (J-812) (EL-688MM) (VICTOR)	SRT-175 = 1
	3399	J/S HSG. (J-932) (EL-808MM) (VICTOR)	SRT-200 = 1
	3396	J/S HSG. (J-1057) (EL-933MM) (CHA)	SRT-225 = 1
21	2023	OIL SEAL 65 X 90 X 10	1
22	2024	BEARING 32213	1
23	2025	CROWN 23 TEETH (CHA)	1
24	3324	JACK SHAFT TAPER SLEEVE (CHA)	1
25	2020	JACK SHAFT (TL-697) SRT-5 (CHA)	SRT-150 = 1
	3335	JACK SHAFT (TL-811) (VICTOR)	SRT-175 = 1
	3276	JACK SHAFT (TL-931) (VICTOR)	SRT-200 = 1
	3142	JACK SHAFT (TL-1056) (CHA)	SRT-225 = 1
26	1093	CASTLE NUT 40mm	1
27	2100	COTTER PIN (DIA 4 X 76MM)	1
28	1013	BEARING 30210	1
29	2225	BACK PLATE 1000 RPM GASKET (CHA)UPGRADED	1
30	3267	BACK PLATE 1000 RPM (CHA) UPGRADED ALU.	1
31	3312	EXTENSION TUBE 704MM EX. SIDE (VICTOR)	SRT-150 = 1
	3304	EXTENSION TUBE 829MM EX. SIDE (VICTOR)	SRT-175 = 1
	3278	EXTENSION TUBE 949MM EX. SIDE (VICTOR)	SRT-200 = 1
	3305	EXTENSION TUBE 1064MM EX. SIDE (VICTOR)	SRT-225 = 1
32	1306	SPRING WASHER 12mm	16
33	17275	HEX BOLT M12 X 1.75 X 30 (8.8) DIN933	16
34	1304	SPRING WASHER 10mm	4
35	3340	HEX BOLT M10 X 1.50 X 30 (8.8) DIN933	4
36	17270	HEX BOLT M10 X 1.50 X 25 (8.8) DIN931	3
37	1596	1/2 BSP BOLT WITH O-RING	1

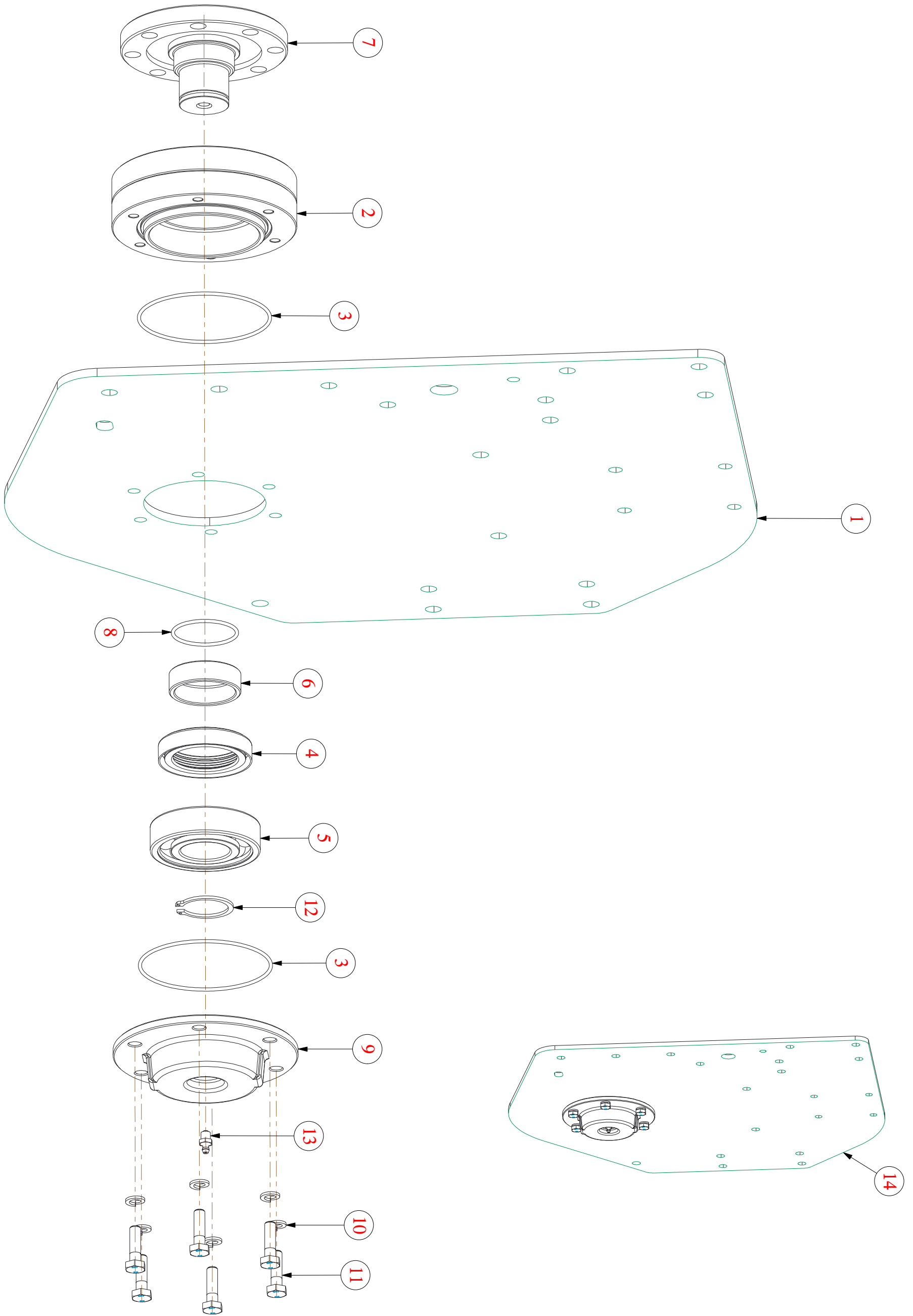
SR NO	MANUAL CODE	MATERIAL DESCRIPTION	QTY
38	17262	OIL SEAL 55 X 75 X 8	1
39	1411	SIMS (DIA 85 X 75)(0.30MM)	1
	1412	SIMS (DIA 85 X 75)(0.50MM)	1
40	3307	GEAR BOX ASSY 150 (VICTOR)	1
	3275	GEAR BOX ASSY 175 (VICTOR)	1
	3293	GEAR BOX ASSY 200 (VICTOR)	1
	3299	GEAR BOX ASSY 225 (VICTOR)	1

SIDE DRIVE PARTS



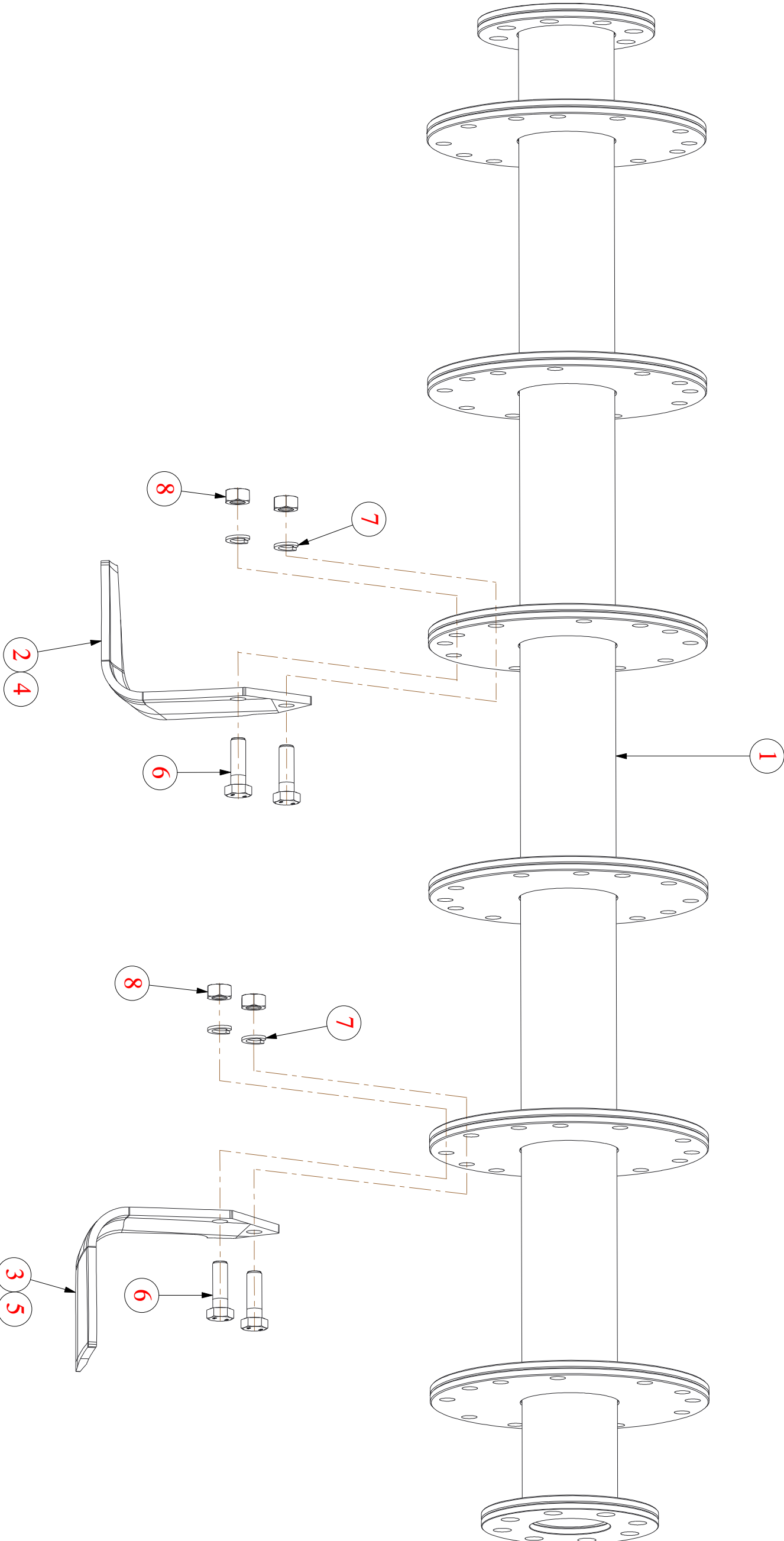
SIDE DRIVE PARTS			
SR NO	MANUAL CODE	MATERIAL DESCRIPTION	QTY
1	3272	TILLER END PLATE WELD GD SIDE (VICTOR)	1
2	1530	R D HOUSING (REG+)	1
3	4654	O RING 175 X 3 (VITON)	1
4	1101	MULTILIP OIL SEAL BIG-6311	1
5	1102	BEARING 6311 LU	1
6	1103	CIRCLIP INTERNAL 120MM	1
7	2318	R D SLEEVE GEAR (REG) NEW	1
8	4841	R D SHAFT (REG +) (SPLINE ROLLING)	1
9	1070	O RING 53 X 3	1
10	1304	SPRING WASHER 10MM	8
11	17270	HEX BOLT M10 X 1.50 X 25 (8.8) DIN931	13
12	3270	GASKET PIN IDLE GEAR (VICTOR)	1
13	3271	PIN IDLE GEAR (VICTOR)	1
14	1013	BEARING 30210	2
15	3026	MIDDLE SPACER 34 TEETH GEAR (CHA)	1
16	3020	GEAR 34 TEETH (CHA)	1
17	3027	CIRCLIP INTERNAL 90MM	2
18	3411	TILLER END PLATE TR. SIDE ASM(VICTOR)SR	1

STUB AXLE PARTS



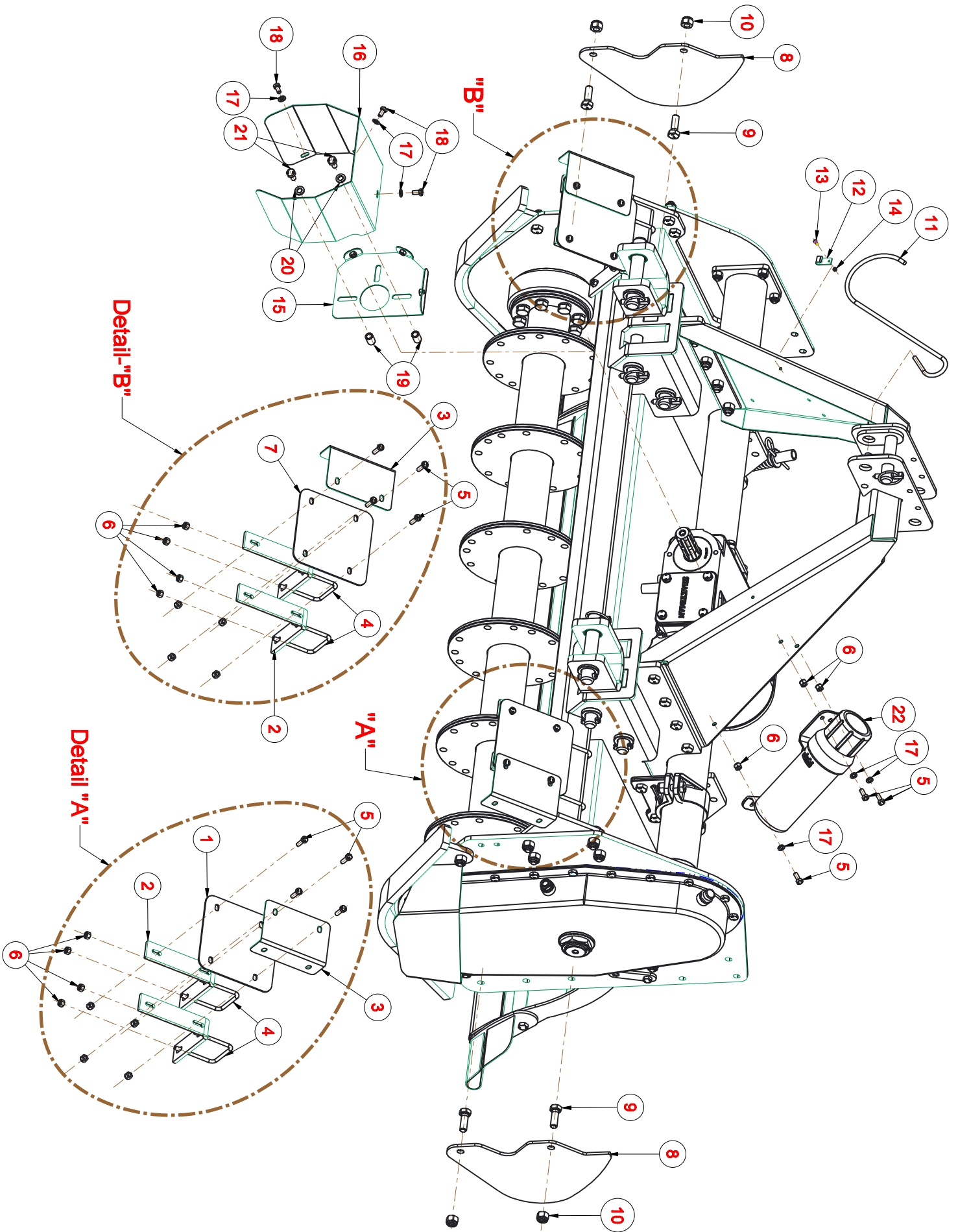
STUB AXLE PARTS			
SR NO	MANUAL CODE	MATERIAL DESCRIPTION	QTY
1	3274	TILLER END PLATE EX. SIDE (VICTOR)	1
2	1529	STUB AXLE HOUSING (REG+)	1
3	1323	O RING 115 X 3 (VITON)	2
4	1072	MULTILIP OIL SEAL-6309	1
5	1073	BEARING 6309 LU	1
6	1600	STUB AXLE SLEEVE (REG) NEW	1
7	4630	STUB AXLE (REG +)	1
8	1070	O RING 53 X 3	1
9	2331	STUB AXLE END COVER (NEW) (SEMI +)	1
10	1304	SPRING WASHER 10MM	6
11	3345	HEX BOLT M10 X 1.50 X 35 (8.8) DIN931	6
12	4711	CIRCLIP EXTERNAL 45MM (Heavy Duty)	1
13	1253	1/8 BSP GREASE NIPPLE 7.5MM	1
14	3273	TILLER END PLATE EX. SIDE ASM (VICTOR)	1

ROTOR PARTS



Rotor Parts			
SR NO	MANUAL CODE	MATERIAL DESCRIPTION	QTY
1	3309	ROTOR WELDMENT OUTWARD 150 (VICTOR)	1
	3281	ROTOR WELDMENT OUTWARD 175 (VICTOR)	1
	3295	ROTOR WELDMENT OUTWARD 200 (VICTOR)	1
	3301	ROTOR WELDMENT OUTWARD 225 (VICTOR)	1
2	23159	BLADE CURVED LH (90X8) (190X138)	AS REQ.
3	23160	BLADE CURVED RH (90X8) (190X138)	AS REQ.
4	1374	BLADE L- TYPE LH (CHA) INDIAN	AS REQ.
5	3029	BLADE L- TYPE RH (CHA) INDIAN	AS REQ.
6	23318	HEX BOLT M14 X 1.50 X 40 (8.8) DIN931	AS REQ.
7	1307	SPRING WASHER 14mm	AS REQ.
8	3347	HEX NUT M14 X 1.50 DIN 934	AS REQ.

CE KIT PARTS



CE KIT PARTS			
SR NO	MANUAL CODE	MATERIAL DESCRIPTION	QTY
1	3337	PLATE END FRONT CE KIT 150 (VICTOR)	SRT-150/175 = 1
	23150	PLATE,FRONT BARRIER (L=330)(SRT-10)	SRT-200/225 = 1
2	23149	BRACKET,FRONT BARRIER (JUMBO)	4
3	3333	PLATE,END,FRONT BARRIER (VICTOR)	2
4	3260	SQ BEND U-BOLT M8X1.25X75X92X30TL	4
5	8171	HEX BOLT M8 X 1.25 X 25	11
6	1297	NYLOCK NUT M8X1.25 (DIN-982)	19
7	3337	PLATE END FRONT CE KIT 150 (VICTOR)	SRT-150/175 = 1
	23150	PLATE,FRONT BARRIER (L=330)(SRT-10)	SRT-200/225 = 1
8	3290	CE SIDE SHIELD (VICTOR)	2
9	3341	HEX BOLT M14 X 1.50 X 40 (8.8) DIN933	4
10	1302	NYLOCK NUT M14X1.50 (DIN-982)	4
11	23146	DRIVELINE HOOK 370MM	1
12	23147	PLATE,HOOK HOLDING (JUMBO)	1
13	23029	HEX BOLT M4 X 0.75 X 10	1
14	23028	HEX NUT M4 X 0.75	1
15	3322	BACK PLATE GUARD COMP (VICTOR)	1
16	3288	SHAFT GUARD (VICTOR)	1
17	8064	PLAIN WASHER 8MM	6
18	8190	HEX BOLT M8 X 1.25 X 15	3
19	1417	JOINT COVER MOUNTING BUSH	2
20	8078	PLAIN WASHER 10MM	2
21	17276	HEX BOLT M10 X 1.50 X 20(FT)(8.8) DIN933	2
22	26030	MANUAL BOX COVER 1/2(SMMSD)	1