

FIELDMASTER®

• PREMIUM FARM EQUIPMENT •

HEAVY DUTY SLASHERS

Models: HD, JUMBO + TITAN



**OWNERS/OPERATORS MANUAL
AND SPARE PARTS LIST**

This manual contains valuable information about your Fieldmaster mower. It has been carefully prepared to give you helpful suggestions for operating, adjusting, servicing repair parts.

Keep this manual in a convenient place for quick and easy reference. Study it carefully. You have purchased a dependable and sturdy implement, but only by proper care and operation can you expect to get the service and long life designed and built into it.

RIGHT-HAND AND LEFT-HAND sides are determined by watching from the tractor side.

Sometime in the future, your implement may need new parts to replace those are worn or broken. If so, go to nearest Fieldmaster dealer and provide them with the model and part number.

Congratulations for purchasing your new Fieldmaster implement.

This implement has been designed and manufactured following all safety and quality requirements needed for a safe and satisfactory use over time.

A careful reading of this manual will allow you to understand this new piece of equipment and will provide you all the tools needed to use it safely.

Proper maintenance and knowledge of the safety rules of use will ensure the best performance and extend the life of the machine.



The Safety Alert Symbol used throughout this manual and on safety decals of the machine indicates the presence of potential hazard to the operator. When you see this symbol, be alert and carefully read the message that follows it.

The Safety Alert Symbol is used in conjunction with following Signal Words, according to the degree of possible injuries that may result operating the implement:

 **DANGER**

Indicates an imminently hazardous situation that, if not avoided, will result in death or serious injury.

 **WARNING**

Indicates a potentially hazardous situation that, if not avoided, could result in death or serious injury, and includes hazards that are exposed when guards are removed. It may also be used to alert against unsafe practices.

 **CAUTION**

Indicates a potentially hazardous situation that, if not avoided, may result in minor or moderate injury. It may also be used to alert against unsafe practices.

IMPORTANT

Indicates instructions or procedures that, if not observed, can cause damage to equipment or environment.

NOTE

Indicates helpful information.

READ, UNDERSTAND, and FOLLOW the safety messages following the Safety Alert Symbol and Signal Words. Failure to comply with safety messages could result in serious bodily injury or death.

1. ABOUT THIS MANUAL

The operator must read the manual for a correct understanding of the hazards that may present when operating the implement, as well as for obtaining optimum performance from the machine.

The manual is part of the machine, it must be kept in good condition and remain with the machine even in case of resale, until its demolition. In case of loss or damage, request a new copy from the Manufacturer, Importer or your Dealer.

The information, descriptions and illustrations in this manual describe the state of the product at the time of its publication, and may not reflect the product in the future.

The Manufacturer reserve the right to make design improvements or changes in specifications without incurring any obligation to install them on units previously sold.

Text, illustrations and drawings of this manual cannot be disclosed or transmitted, in whole or in part, to third parties without the written permission of the Manufacturer. All rights are reserved

SAFETY

Safety is a primary concern in the design and manufacturing of our products. Unfortunately, our efforts to provide safe equipment can be wiped out by a single careless act of an operator.

In addition to the design and configuration of equipment, hazard control and accident prevention are dependent upon the awareness, concern, prudence and proper training of personnel involved in the operation, transport, maintenance and storage of equipment.

It has been said, "The best safety device is an informed careful operator." We ask you to be that kind of operator.

The manufacturer assumes no liability for any damage resulting from not applying the behavioral rules indicated in the manual.

1.1. GENERAL SAFETY INSTRUCTION

DANGER

The machine must be used only by authorized and well-trained operators. The operator must have read and understood the instructions of this manual. They must make adequate preparation for the proper use of the machine and in case of doubt about the use of the machine and/or the interpretation of this manual the operator must contact the Manufacturer or the Dealer immediately.

WARNING

The manual must always remain with the machine. In case of loss or damage, request a new copy from the Manufacturer or your Dealer.

WARNING

Follow strictly the rules prescribed by the safety pictograms applied to the machine.

WARNING

Be sure that all safety pictograms are legible. If pictograms are worn, they must be replaced with others obtained from the Manufacturer and placed in the position indicated by this manual.

DANGER

Before using the machine, make sure that all safety devices are installed and in good working conditions. In case of damages of shields, replace them immediately.

DANGER

Is absolutely forbidden to remove or alter safety devices.

DANGER

Before starting and during operation of the implement make sure there are no people or animals in the area of operation: the machine can project material from the back, front or side, with risks of serious injury or death.

DANGER

Pay maximum attention to avoid any accidental contact with rotating parts of the machine.

DANGER

During operation, adjustment, maintenance, repairing or transportation of the machine, the operator must always use appropriate Personal Protective Equipment (PPE).

This includes but is not limited to the following -

- A hard hat
- Protective shoes with slip resistant soles
- Protective goggles, glasses or face shield
- Heavy gloves
- Protective clothing
- Hair net or similar to contain long hair
- Suitable ear protection (ear muffs, ear plugs)

 DANGER

Do not operate the implement while wearing loose-fitting clothing that can give rise to entanglement in parts of the machine.

 DANGER

Do not operate the implement when tired, not in good condition or under the influence of alcohol or drugs.

 CAUTION

If the use of the machine is required at night or in conditions of reduced visibility, use the lighting system of the tractor and possibly an auxiliary lighting system.

1.2. EQUIPMENT SAFETY INSTRUCTIONS

 WARNING

Use the implement for its intended purpose only. Improper use can damage the implement and cause serious injury to persons, animals, or death.

 DANGER

The machine should be used by a single operator driving the tractor.

 WARNING

Any unauthorized modification of the machine may cause problems in safety and relieves the Manufacturer from any liability for damages or injuries that may result in operators, third parties and objects.

 WARNING

Before using the machine, familiarize yourself with its controls and its working capacity.

 WARNING

Do not leave the implement unattended with tractor engine running.

 WARNING

Do not operate implement on unstable (muddy or sandy) or rocky ground.

 WARNING

Keep the machine clean from debris and foreign objects which may damage functioning or cause injury.

 WARNING

Do not use the machine if the category of the connecting pins of the implement does not match that of the tractor hitch system.

 WARNING

Do not use the machine with missing bolts, screws, pins, safety guards or safety pins.

 WARNING

Never use the machine to transport or lift people, animals or objects

 WARNING

Make certain that at least 20% of the total weight (tractor, implement and ballast) is on the front axle of the tractor to ensure stability. Add front ballast if required.

 WARNING

Before engaging the tractor PTO, make sure the tractor PTO speed is set as required for this implement (540 rpm or 1000rpm). Do not over speed PTO or machine breakage may result.

 DANGER

Do not operate the implement if the driveshaft is damaged. The driveshaft could break during operation, causing serious injury or death. Remove the driveshaft and repair or replace it before continuing operation.

1.3. OPERATING SAFETY INSTRUCTIONS

 WARNING

Before using the machine, be sure to have cleared the operating area from obstacles (stones, branches, debris, etc...). Mark all the obstacles that cannot be removed (e.g. by means flags).

 DANGER

Never engage the tractor PTO in the presence of people close to the driveshaft. The body, hair or clothing of a person can get caught in rotating parts, causing serious injury or death.

 DANGER

Before engaging the PTO and during all operations, make sure that no person or animal is in the immediate area of action of the machine. Never use the implement if people are in the working area.

 DANGER

It's absolutely forbidden to stand near an implement like this when parts are moving.

 WARNING

The operator must operate implement (lifting/lowering) only from the driving seat of the tractor. Do not perform lifting maneuvers on the side or behind the tractor.

 WARNING

Before making changes in direction, turns or going in reverse, slightly lift the implement off the ground after disengaging the power take-off, to avoid damage to the machine.

 DANGER

In presence of steep slopes the action of this machine may cause instability of the tractor with a risk of tipping off which a consequence may be serious injury or death hazard. Consult the manual for the tractor to determine the maximum slope that the tractor is able to deal with.

 DANGER

Always disengage the PTO before raising the implement and never engage the PTO with the implement raised. The machine might throw objects at high speed, causing serious injury or death.

 WARNING

Never leave the driver's seat when the tractor is turned on. Before leaving the tractor, lower the implement to the ground, disengage the PTO, insert the parking brake, stop the engine and remove the key from the control panel.

 DANGER

The PTO shields of the tractor and implement side, the driveshaft shielding and the driveshaft retaining chains must be properly installed and in good condition, to avoid the risk of entanglement with serious injury or death.

 DANGER

Before engaging the PTO of the tractor, always make sure that the drive shaft is mounted in the correct direction, and that its clamping elements are properly connected both to tractor side and to Rotary Hoe side.

 WARNING

Stop operating immediately if blades strike a foreign object. Repair all damage and make certain rotor, blades, couplings, PTO shaft and bolts are in good condition before resuming operation.

 WARNING

Always disengage the tractor PTO when the driveshaft exceed an angle of 10 degrees up or down while operating. An excessive angle with driveshaft rotating can break the driveshaft and cause flying projectiles.

 CAUTION

Avoid clutch overheating and wearing caused by too long or frequent slipping of the clutch, since it can damage the clutch components. Before checking the clutch, make sure it has cooled. Clutch could be extremely hot and cause a severe burn.

 CAUTION

Prolonged use of the implement can cause overheating of the gearbox. Do not touch the gearbox during use and immediately after, it could be extremely hot and cause a severe burn.

 WARNING

All repairs to the implement must be performed by qualified and trained operators, with the tractor engine off, the PTO disengaged, the implement lowered to the ground or on security stands, the ignition key off and the parking brake set.

1.4. TRANSPORTING SAFETY INSTRUCTIONS

 WARNING

Before transporting, determine the stopping characteristics of the tractor and implement.

 WARNING

Transport only at speeds where you can maintain control of the equipment.

 WARNING

When driving on roads, the implement must be in transport position, adequately raised from the road surface, with tractor lifting hydraulics locked so that the implement cannot be lowered accidentally.

 DANGER

The implement may be wider than the tractor. Pay attention to transporting for people, animals, buildings/sheds and/or other obstacles.

 WARNING

When turning, use extreme care and reduce tractor speed.

 WARNING

Do not operate the tractor with weak or faulty brakes or worn tires.

 CAUTION

Always use tractor lighting system and auxiliary lighting system for an adequate warning to operators of other vehicles, especially when transporting at night or in conditions of reduced visibility.

 DANGER

In the case of lifting this implement, make sure that any lifting device is suitable to perform the operation safely, and use only the lifting points prescribed on Rotary Hoe.

1.5. MAINTENANCE SAFETY INSTRUCTIONS

 WARNING

All maintenance and repair operations must be performed by qualified and trained operators, with the tractor engine off, the PTO disengaged, the implement lowered to the ground or on security stands, the ignition key off and the parking brake set.

 WARNING

Perform repairs and replacements part should only be original spare parts provided by the manufacturer, importer or your dealer.

 DANGER

Perform maintenance operations using appropriate Personal Protective Equipment (protective eyeglasses, hard hat, hearing protection, safety shoes, overall and work gloves, filter mask).

 CAUTION

Before any maintenance operation, make sure that the parts which become hot during use (friction clutch, gearbox...) have cooled.

 WARNING

Do not perform repairs that you do not know. Always follow the manual instructions and in case of doubt contact the Manufacturer or your dealer.

 DANGER

Do not swallow fuels or lubricants. In case of accidental contact with eyes, rinse well with water and consult a doctor.

1.6. STORAGE SAFETY INSTRUCTIONS

 WARNING

Never leave the tractor unattended with the implement in the lifted position. Accidental operation of lifting lever or a hydraulic failure may cause a sudden drop of the unit which may result in injury/death.

 DANGER

Following the operation, or before unhooking the implement, stop the tractor, set the brakes, disengage the PTO, lower the attached implement to the ground, shut off the engine, remove the ignition key and wait for all moving parts to stop.

 WARNING

Make sure all parked machines are on a hard, level surface and engage all safety devices.

 CAUTION

Place support blocks under implement as needed to prevent the unit from tipping over onto a child and/or an adult. An implement that tips over can result in injury or death.

 CAUTION

Store the unit in an area away from human activity.

1. SAFETY LABELS

The safety labels applied on the machine give fundamental information for using the machine safely.

Make sure safety labels are in good conditions. If pictograms are worn, they must be replaced with others obtained from the manufacturer and placed in the position indicated by this manual.

Make sure the safety labels are legible. If necessary, wipe them by a cloth, with soap and water.

5.1. STARTUP

Before the startup and before each use, perform the following pre-operation inspections and service of the implement:

- Check that the implement has no damaged functional parts and has all mechanical parts in good condition. Repair and / or replace the damaged parts;
- check that the implement has no missing parts (pins, safety pins, plugs oil ...). Restore the missing parts;
- check that all guards and safety devices have no damages and are properly positioned. Repair and / or replace the damaged shields, restore the correct position;
- verify that the PTO driveshaft is properly installed (see section: Connection of the drive shaft);
- check that the driveshaft clutch is in good condition, and that its components are not subject to "sticking" (see section: Maintenance / Driveline);
- check the presence of lubricant in all greasing points of the implement (driveshaft, supports...)
- Check for oil leaks from the gearbox or the transmission side cover. Identify the reason of loss, then repair and / or replace the damaged components;
- check the correct oil level in the gearboxes
- check that blades are not excessively worn and the relating hardware is correctly tightened
- check that all hardware (nuts, bolts, etc.) are properly tightened.
- check that all safety decals are correctly positioned, in good condition and legible. Replace any damaged decals;
- check that there are no constraints that may prevent the movement of equipment. Remove any constraint.

Before the startup and before each use, make the following checks on the operating area you intend to operate:

- check that area is clear of foreign objects (rocks, branches or debris). Remove any obstacle and visibly highlight obstacles that cannot be removed (e.g. with flags);
- make sure that in the area you intend to operate there are no people or animals;
- make sure the soil to be worked is not too grassy, muddy, sandy or rocky.

WARNING

Before conducting the above inspections and service, make sure the tractor engine is off, all rotation parts are completely stopped and the tractor is in park with the parking brake

engaged. Make sure the implement is resting on the ground or securely blocked up and the tractor lifting hydraulics locked.

Once all the checks above have been done, start the tractor and the implement as follows:

- start the tractor and engage the tractor PTO at low rpm, making sure that the implement is NOT in the raised position but close to the ground, then increase speed engine until to 540 or 1000 rpm (dependent on which size model you have purchased)
- lower the implement on the ground and simultaneously start driving the tractor forward at low speed. Subsequently, increase the ground speed depending on ground conditions;
- If the outside temperature is very cold, it's recommended to engage the PTO and have the implement operate at low speed (with the tractor stationary) to warm oil and lubricate parts;
- Drive for a while operating the implement then stop the tractor to check the quality of the work performed. If you need to get off the tractor, reduce engine speed and disengage PTO, set the parking brake, stop engine and remove the ignition key.

General Safety Precautions



- *¶ Preventing accidents is the responsibility of every equipment operator.
- DO NOT allow persons to operate machine without proper INSTRUCTIONS in the use of the machine. (DO NOT USE FOR PURPOSES OTHER THAN FOR WHICH THE MACHINE IS DESIGNED).
 - In adjustments and operating factors recommended for particular uses.
 - In maintenance of safety guards and all factors of machine servicing for safe operation.
 - A safe speed to operate machine taking to account particular site and use.



CAUTION

STOP MACHINE

- BEFORE DISMOUNTING FROM TRACTOR
- MAKING ANY ADJUSTMENT TO MACHINE
- CLEARING ANY BLOCKAGE OR OBSTACLE



WARNING

Keep children and spectators clear – ejected material can fly some distance.
Inspect machine regularly for damaged blades or wear – replace any damage before continued use.

Lubrication is cheap maintenance – adhere to recommended servicing schedule.

IMPORTANT

Check and tighten all bolts on your machine after the first few hours of operation.



Fitting to the Tractor

Ensure tractor linkage is level – adjust. Drop arm wind handle to enable machine to lift evenly and sit evenly on ground.

Top link bracket should be in floating position after selecting preferred cutting height (on roller or wheels).

Precise cutting height can be varied using roller or wheel adjustments.

Check driveshaft length to ensure shaft does not “bottom” when machine is raised, (shafts can be shortened by cutting male and female tube). At any position, the telescoping tubes must be at least 1/3 engaged.

Set stop on hydraulic quadrant to prevent over lifting machine and damaging driveshaft on machine front edge when in raised position or excessive PTO angle.

Adjust linkage sway chains to prevent unnecessary machine side movement.

Before the initial start up of the machine, check gearbox oil level, belt adjustment is correct and all bolts are tight.

The Telescopic Drive Shaft

After hitching up, the telescopic drive shaft can be attached. Careful attention should be given because only correct fitting of this unit can give the best service.

Check the driveshaft length to ensure shaft does not “bottom out” when machine is raised or lowered.

There is a wide range of tractors and the horizontal distance between the power take off shaft and the drawbar varies considerably. A specific instruction for each would require extensive research. However, taking for example the minimum and maximum conditions, safe working lengths of the drive shaft are given as follows:

At any position, the driveshaft tubes must be engaged together by at least 1/3 of the length of the telescoping tubes.

Should your driveshaft need shortening, simply remove the plastic safety covers and cut the steel tubing to the required length with a saw, remove any rough edges or burrs, then refit the safety covers.

Ensure that both splined yokes are securely fastened to the splined shaft on both the tractor and the mower.

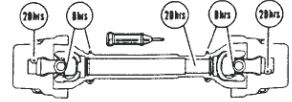
Operation Hints

1. Set cutting height high for initial cut in any area where obstacles are unknown.
2. Machines operate best at 540 PTO delivery.
 - (a) Let rotor speed reach this speed before commencing tractor forward.
 - (b) Achieve suitable ground speed with tractor gears rather than using throttle continuously.
3. Anti-scalp saucers can be fitted to centre or all spindles – recommended in undulating conditions – will increase blade and belt life in addition to preventing scalping.
4. Roller models are generally recommended for safety reasons (roller performs completed discharge barrier) and also enables mowing over kerbs or garden edges saving manual trimming.
5. During operation of the machine, the weight of the mower should be carried on the rear roller and lower link arms of the tractor. The top link toggle should be able to float at all times to allow the mower to follow the contour of the ground.
6. Only use the top link toggle in 'fixed' or 'rigid' position during transport of the mower. Failure to fix the top link toggle in rigid position during transport will result in severe deck, frame or chassis cracking.

Lubrication and Maintenance

Driveshaft

Grease driveshaft on new machine prior to commencing work, and daily when in use. The sliding shaft in the tubes must be fully pulled apart to correctly lubricate with grease. Failure to lubricate the tubes will 'lock' the telescoping tubes during use.



Gearbox

Check oil level before using and check daily to oil level plug (or instant check sight glass if equipped). Use SAE 90 EP oil. Drain oil after first 50 hours of use, thereafter every 80 hours.

Spindles

It is recommended that you use your dealer to service spindle for bearing replacement (this is a precision part requiring the right equipment and 'know-how' for correct servicing).

Blades

Blades cut best if kept sharp (do not over grind or heat blade otherwise blade temper could be impaired affecting both blade life and wear).

Note: When replacing blades use only genuine Fieldmaster blades and bolts.

Genuine Fieldmaster spares are fitted for safety and longer life (use of non-genuine parts invalidates your warranty). Keep a spare set of blades and mounting bolts on hand for immediate servicing when required.

Belts

Use only genuine Fieldmaster supplied deep groove belts (these belts have been selected carefully to transmit more efficiently and last longer). Check belts frequently for retention after initial 'run in' period of 6 – 10 hours, thereafter weekly. Do not over tension belts (belt slippage is more likely caused by insufficient PTO revs than incorrect tensions). Belt drive is tensioned by sliding gearbox using draw-bolt for tensioning. Release the four gearbox mount plate bolts and tension until belt deflects 20mm in centre using thumb pressure. (Important: Ensure the four gearbox mount plate bolts are retightened securely). For 270/300 4-spindle models gearbox is fixed – Tension belts by adjusting M12 x 100 tensioner bolts attached to tensioner pulleys on left & right side under belt covers.

Roller

Grease daily (2-3 pumps only). Do not over grease. Fieldmaster recommends high quality grease containing molybdenum disulphide. Cartridges are available from Spare Parts Department.

Washing Your Machine

- ☒ Keeping your machine clean will enhance the appearance and minimise the potential of grass acids to cause rusting.
- ☒ Avoid using high pressure water around top of spindles and underside of pulleys.
- ☒ After hosing always run machine up to operating revs to remove the water residue before dismantling the machine or placing into storage.
- ☒ Greasing machine after washing is a recommended habit as this prevents water penetration and makes the machine ready for instant

Contact your local Fieldmaster dealer for all services required.

Always quote model & serial numbers when ordering parts.

Routine servicing **IMPORTANT!**

Like all machinery and motorcars, your 5000 series mower must be routinely serviced & checked as follows.

After the first 10-15 hours of use: check all gearbox mounting bolts, A-Frame bolts, skid and roller or wheel mounting bolts, check flail and cutter bolts are tight. These will tend to "bed in" after the 1st 10-15 hours and must be checked. Check all oil levels, driveshaft grease, universal joints, and roller and wheel bearings. Check main hub nut (holding flail/blade carrier to gearbox) is tightened as this is a taper spline shaft that also takes some "bedding-in" and must be tightened. Remove belt covers and check belts are tensioned correctly (see above).

At the end of the mowing season: we request that you call your Fieldmaster agent to have an "out of season service". This will repeat all of the above service checks along with replacement of blade tips, blade sharpening, balance check, check and/or replace any worn roller bearings, wheel bearings and ensure the machine is running correctly ready for the next season.

FAILURE TO ATTEND TO SERVICING AS SHOWN ABOVE WILL ONLY CAUSE PREMATURE FAILURE OF SOME COMPONENTS. THIS TYPE OF FAILURE IS NOT COVERED BY WARRANTY.



IMPORTANT NOTES:

CORRECT SET-UP OF 'FLOATING TOP LINK' SLOT / CONNECTION TO TRACTOR:

1. Once the machine is connected to the tractor, set the tractor and machine down on flat ground (preferably concrete)
2. Lift the lower link arms slightly to just take the weight of the front of the machine (i.e. the front of the skids would be 5mm off the ground). If machine fitted with front wheels or rollers these should be set to just run on the ground.
3. Set the lower link draft arms of the tractor at this position so they cannot go lower than this, and ensure they can float. (i.e. not fixed)
4. At this point, set the top link into the centre of the top link slot (not the hole)
5. Ensure the fixed top link hole is only ever used during transport of the machine.

Following this correct procedure will ensure:

- A good even cutting finish
- Reduce the possibility of scalping or digging in
- Extended wearing life of the side skids
- Machine construction is relieved of undue stresses

Failure to set up as above can result in serious damage to the machine caused by tractor weight transferring to headstock and chassis which is NOT covered by the warranty.

Before commencing work you will want to adjust the height of the cut. With your FIELDMASTER MOWER Series here are numerous cutting heights to achieve the optimum desired length of cut to prevent scalping and give an even and accurate cut. N.B. Machine is designed / factory set with correct 'lean-in' angle (blade tip lower at front than rear) for efficient cutting and discharge.

Simple adjustment is carried out by removing the bolts on the side of the skids and relocating them once the skids have been raised or lowered.

There are three basic ways to adjust the height of the cut:

1. By adjusting the skids in relation to mowing deck;
2. By adjusting the rear roller or wheels in relation to the mowing deck and skids; (if fitted)
3. By adjusting both the roller assembly or wheels separately (if fitted) in relation to the mowing deck to give a wide range of roller-to-skids positioning in conjunction with altering the height of cut.

It is important to set your FIELDMASTER MOWER up correctly for mowing according to the ground conditions.

Firstly, in the optimum flat field mowing the FIELDMASTER should be used on the roller only with the skids approximately one inch higher above the roller to give stability on any slight unevenness and to avoid any undue lateral roll of the FIELDMASTER at higher speeds.

Secondly, where mowing is not in so perfect a condition, it is important that the skids are set at approximately the same height as the roller when fitted.

Thirdly, in more extreme undulations and rougher ground it is best to have the roller (where fitted) about one inch above the skids.

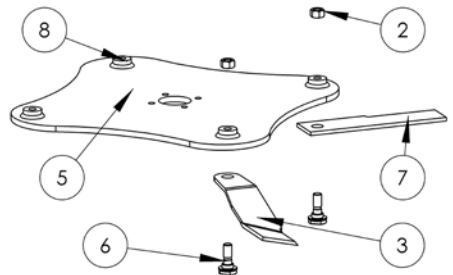
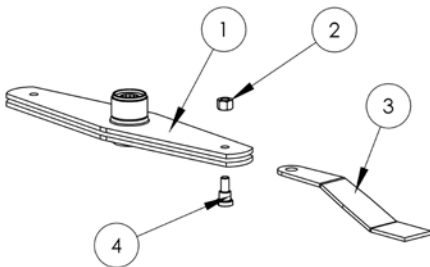
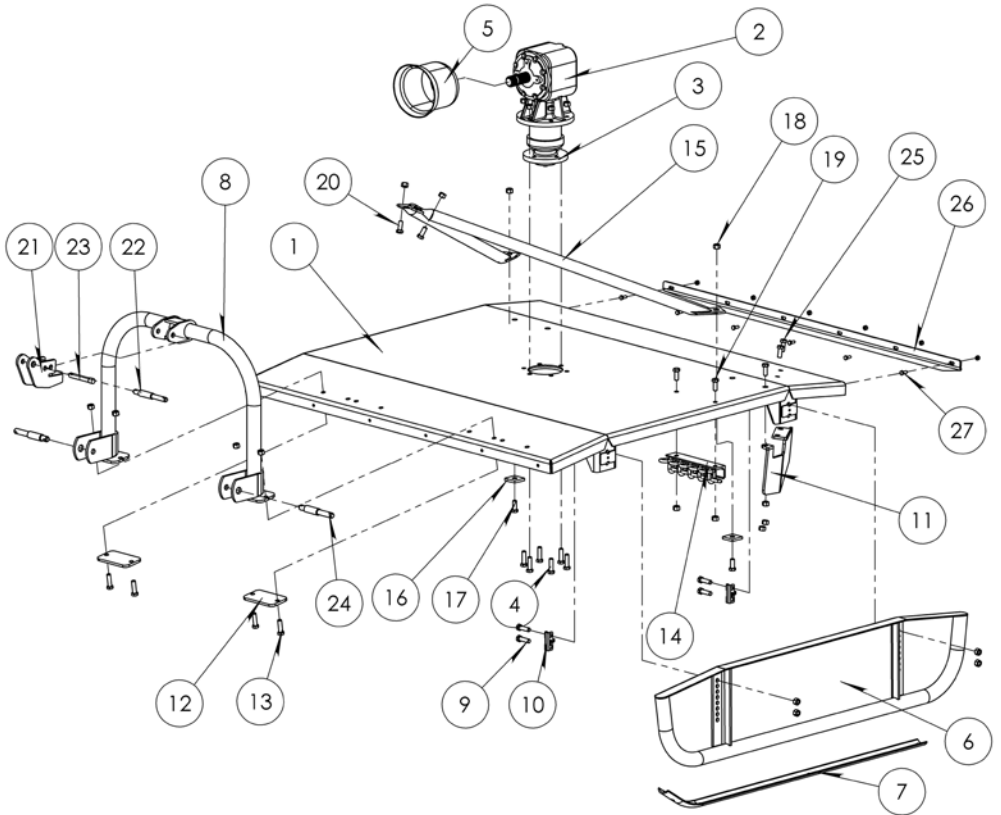
These three setting positions for three different types of mowing applications have proved to be the most satisfactory.

There are other points which could be mentioned, such as wet conditions where it's important that the roller takes most of the weight of the machine rather than the skid to avoid skid marks and also in very dry conditions if the ground is reasonable skid wear can be reduced with more pressure on the roller. However, individual conditions and varying operators will find success sometimes in the varying of these conditions. A finer adjustment can be achieved by lengthening or shortening the tractor top link arm.

It is important that the top link arm is adjusted so that the skid runners are running parallel with the ground. This will automatically give the mowing deck approximately 3/4" (19mm) 'lead-in' required for good mowing. This check should be made with tractor and mower on level surfaces with mower in cutting position. The best cutting performance will be gained when a RPM speed of 540 RPM is maintained.

HD SERIES SLASHER

HD60, HD70



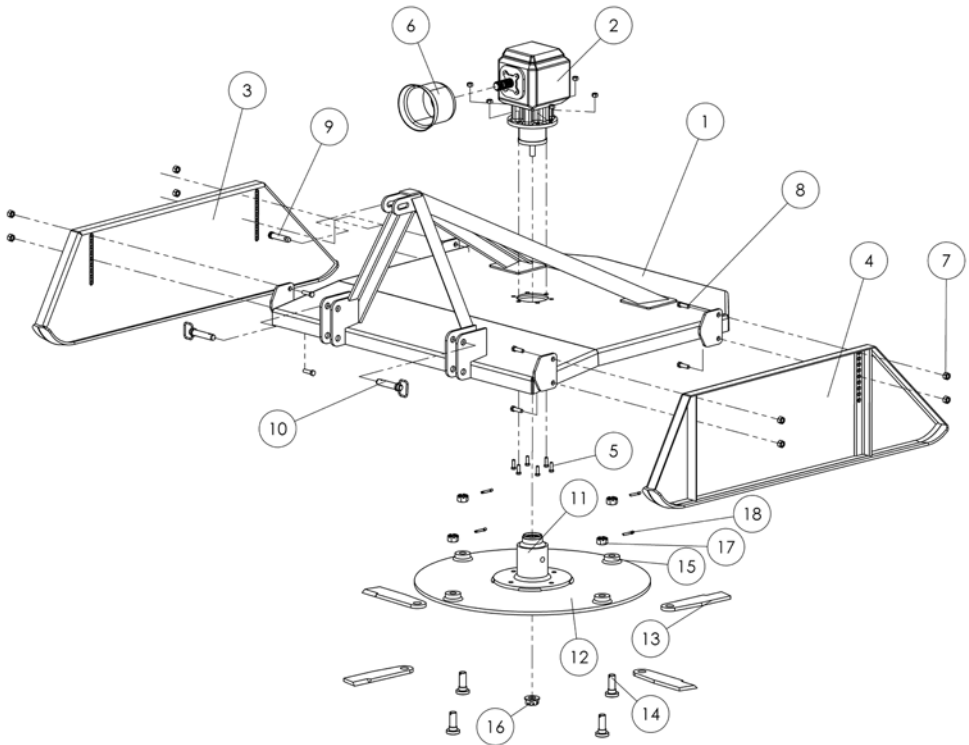
| ITEM NO | PART NO | DESCRIPTION |
|---------|----------|----------------------------------|
| 1 | 603.01 | Main Deck (HD60) |
| | 703.01 | Main Deck (HD70) |
| 2 | 01-307 | Gearbox |
| 3 | 15-007 | Flange hub for gearbox |
| 4 | B1670 | M16 x 70 Bolt & Nyloc Nut |
| 5 | 21904.02 | PTO Cone |
| 6 | 1838.01 | Skid (HD60) LH & RH |
| | 1839.01 | Skid (HD70) LH & RH |
| 7 | 981193 | Hardened Skid Shoe (Weld) (pair) |
| 8 | 1878-01 | A-Frame |
| 9 | B1670 | M16 x 70 Bolt & Nyloc Nut |
| 10 | 910913 | Skid Bolt Retainer Plate |
| 11 | 691605 | Flow Vane |
| 12 | 64 | Reinforcing Washer Plate |
| 13 | B1660 | M16 x 60 Bolt & Nyloc Nut |

| ITEM NO | PART NO | DESCRIPTION |
|---------|---------|---------------------------|
| 14 | 691606 | Mulching Chain Choke |
| 15 | 66.01 | Rear Stay (HD60) |
| | 67.01 | Rear Stay (HD70) |
| 16 | 65.01 | Reinforcing Washer (Stay) |
| 17 | B1660 | M16 x 60 Bolt & Nyloc Nut |
| 18 | B2050 | M20 x 50 Bolt & Nyloc Nut |
| 19-20 | B1650 | M16 x 50 Bolt & Nyloc Nut |
| 21 | 1731A | Toplink Toggle |
| 22 | 5043 | Cat 1 /2 Top Link Pin |
| 23 | 5074 | Toggle Mount Pin |
| 24 | 5044 | Cat 1 /2 Lower Link Pin |
| 25 | B2060 | M20 x 60 Bolt & Nyloc Nut |
| 26 | 691607 | Front or Rear Deflector |
| | 691707 | Front or Rear Deflector |
| 27 | B1030 | M10 x 30 Bolt & Nyloc Nut |

HD FLAIL PLATE

| ITEM NO | PART NO | DESCRIPTION |
|---------|-----------|--------------------------------------|
| 1 | 1866 | 2 Blade Carrier (HD 60) |
| | 1866 | 2 Blade Carrier (HD 70) |
| | 1865 | 2 Blade Carrier (HD 80) |
| 2 | 377PL | Lock Nut |
| 3 | 1060LH | Stepped Axe Flail (HD 60) 406mm long |
| | 1070LH | Stepped Axe Flail (HD 70) 460mm long |
| | 1080.02 | Stepped Axe Flail (HD 80) 525mm long |
| 4 | 2443 | Flail Bolt (2 Blade) |
| 5 | 970134.01 | 4 Blade Carrier HD60 |
| | 970134.02 | 4 Blade Carrier HD70 & 80 |
| 6 | 2443.01 | Flail Bolt for 4 Blade |
| 7 | 1060.01 | Straight Flail (HD 60) 365mm long |
| | 1070.01 | Straight Flail (HD 70) 440mm long |
| | 1080.01 | Straight Flail (HD 80) 500mm long |
| 8 | 156001 | Weld on threaded boss |

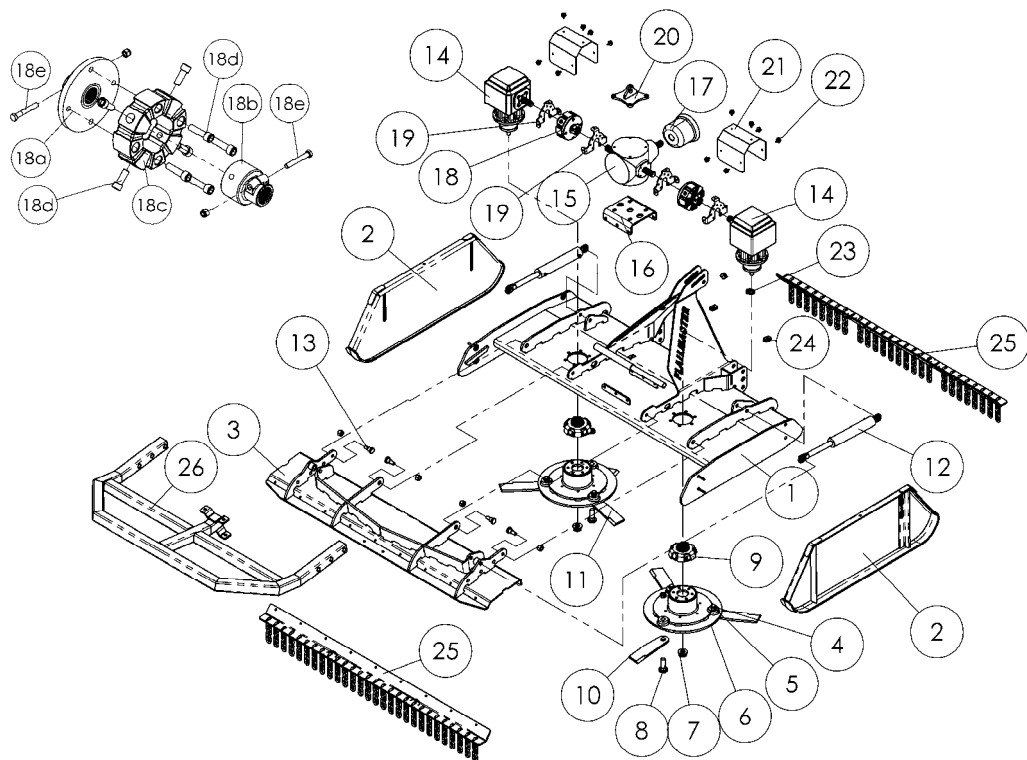
JUMBO ROTARY SLASHER / BRUSHCUTTER



| ITEM NO | PART NO | DESCRIPTION |
|---------|-----------|---|
| 1,3,4 | 7011K | "Main Deck (Kit c/w A-Frame & 2 x Skids)" |
| 2 | 01.363 | Gearbox (ITG) |
| N/S | 3150147R | Gearbox (BY-PY) up to 2005 |
| 4 | 2190402 | PTO Cone |
| N/S | | PTO Cone Mounting Bolt |
| 5 | B2070 | Bolt & Nyloc Nut |
| 6 | 2190402 | PTO Cone |
| 7 | | Skid Mounting Bolt and Nut |
| 10 | 5050 | Lower Link Pin |
| 16 | 330001209 | Hub Nut for BY-PY 3150 Gearbox |
| | 11.050 | Hub Nut for ITG 01.363 Gearbox |
| 9 | 10028 | Top Link Pin, Cat 2 |

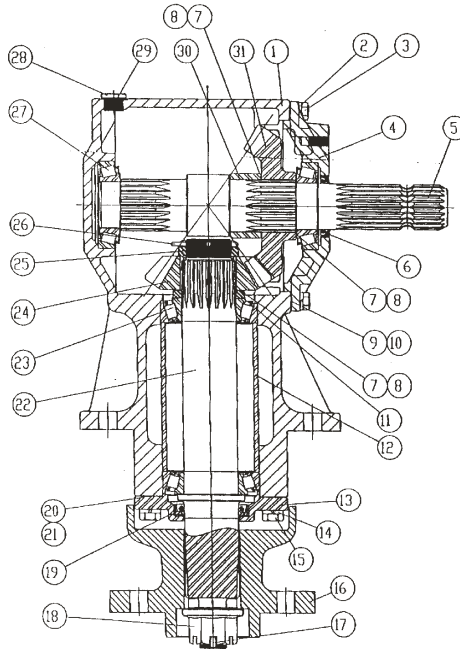
| ITEM NO | PART NO | DESCRIPTION |
|---------|----------------|--|
| 11 | 1007-J6 | Hub & Flange (ITG Gearbox) |
| | 1007-J5 | Hub & Flange (By-Py Gearbox) |
| 12 | 970138 | Flail Plate (16mm) /Circular |
| 13 | 920509 | Axe Flail - Standard 16mm (400mm x 100mm x 16mm) |
| | 920507 | Straight Axe Flail 12mm |
| | 920507.01 | Kinked Axe Flail 12mm |
| 14 | 1005.01 | HD Flail Bolt (16mm Flail) |
| | 1005 | HD Flail Bolt (12mm Flail) |
| 15 | 86001 | "Weld On" Flail Bolt Hub |
| 16 | 11.050 | Main Hub Nut (ITG) |
| | 330001209 | Main Hub Nut (BY-PY) |
| 17 | 03.01.107.56 | Flail Castle Nut |
| 18 | 8.4.7.00146 | Split Pin |

TITAN TWIN ROTOR HD SLASHER



| ITEM NO | PART NO | DESCRIPTION | QTY |
|---------|--------------|---|-----|
| | 16 | 87017 Centre Gearbox Mount | 1 |
| | 17 | 21904.02 PTO Cone | 1 |
| 1 | 84005 | Main Deck & A Frame Linkage | 1 |
| 2 | 84006 | Skids LH & RH | 2 |
| 3 | 84012 | Rear Deck | 1 |
| 4 | 03.01.107.56 | Flail Castlenut | |
| 5 | 1012 | Split Pin for Castlenut | |
| 6 | 84007 | Flail Plate (Balanced) | 2 |
| 7 | 11.050 | Castle Nut (Hub) | 6 |
| 8 | 1005.01 | HD Flail Bolt | 6 |
| 9 | 84017 | Flail Plate Adaptor | 2 |
| 10 | 920509 | 16mm Axe Flail LH Cut | 6 |
| 11 | 920510 | 16mm Axe Flail RH Cut | 6 |
| 12 | 998002.01 | Rear Deck Ram | 2 |
| 13 | 2443 | Rear Deck Pivot Bolt | 4 |
| 13A | 377PL | Rear Deck Pivot Locknut | |
| 14 | 01.363 | Outer Gearbox | 2 |
| 15 | 2155100G444 | Centre T Gearbox | 1 |
| | 18 | 35.157/A Coupling Flange | 2 |
| | 18B | 35.157/B Coupling Inner Hub (1 3/4 x 20 sp line) | 2 |
| | 18C | 35.158 Coupling Element | 2 |
| | 18D | 16x55 G12.9 Coupling Socket Head Bolt (Thread Locked) | 2 |
| | 18E | Clamping Bolt Only | |
| | 19 | 35.1622 Transmission Cover Brackets | 4 |
| | 20 | 84013 Lifting Bracket (Optional) | 1 |
| | 21 | 35.1623 Transmission Cover | 2 |
| | 22 | M8 x 25 Cover Fasteners | 12 |
| | 23 | 1177 Hose Mount | 2 |
| | 24 | 1177 Hose Mount | 2 |
| | 25 | 998002.02T Hydraulic Hose Kit | 1 |
| | 25 | 691608 Front Safety Chain Set | 1 |
| | 25 | 691608 Rear Safety Chains (Optional) | 1 |
| | 26 | 84014 Rear Push Frame (Optional) | 1 |
| | 5050 | Lower Link Pin, Cat 2 | 2 |
| | 10028 | Top link Pin, Cat 2 | 1 |

FLAILMASTER HD60/HD70 01-307 GEARBOX

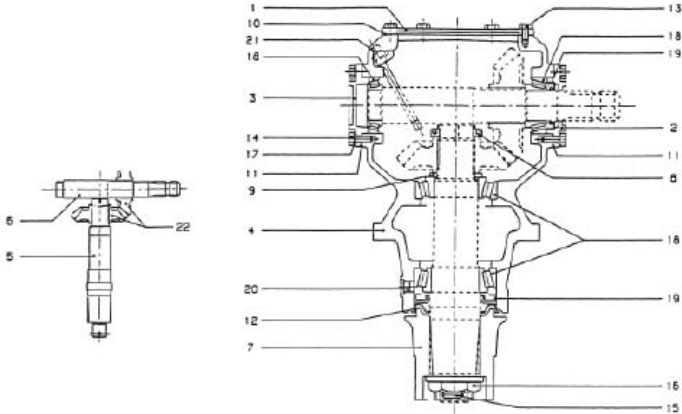


| DET. | PART NO. | QTY | DESCRIPTION |
|------|----------|-----|------------------------------------|
| 1 | 18-073 | 1 | HOUSING |
| 2 | 07-001 | 8 | Ø10 LOCKWASHER |
| 3 | 06-003 | 8 | M10 X 1.5 X 30 HEX HEAD CAP SCREW |
| 4 | 20-001 | 1 | INPUT CAP |
| 5 | 02-003 | 1 | INPUT SHAFT |
| 6 | 05-007 | 1 | INPUT SEAL |
| 7 | 17-002 | VAR | GEAR ADJUSTING SHIM (0.30) |
| 8 | 17-003 | VAR | GEAR ADJUSTING SHIM (0.50) |
| 9 | 08-006 | VAR | INPUT CAP GASKET (0.10) |
| 10 | 08-007 | VAR | INPUT CAP GASKET (0.25) |
| 11 | 10.016 | 1 | GEAR MOUNTING SPACER |
| 12 | 10-087 | 1 | OUTPUT SPACER |
| 13 | 20-002 | 1 | OUTPUT CAP |
| 14 | 07-002 | 4 | Ø12 LOCKWASHER |
| 15 | 06-002 | 4 | M12 X 1.75 X 38 HEX HEAD CAP SCREW |
| 16 | 15-031 | 1 | AG - 2 1/2" BLADE HUB |
| 17 | 12-003 | 1 | CUTTER PIN |
| 18 | 11-008 | 1 | 1" - 14 FLANGED NUT |
| 19 | 05-008 | 1 | OUTPUT OIL SEAL |
| 20 | 08-001 | VAR | OUTPUT CAP GASKET (0.10) |
| 21 | 08-002 | VAR | OUTPUT CAP GASKET (0.25) |
| 22 | 02-137 | 1 | OUTPUT SHAFT SEAL |
| 23 | 04-011 | 2 | BEARING ASSEMBLY |
| 24 | 03-008 | 1 | 13 TOOTH GEAR |
| 25 | 11-012 | 1 | BEARING ADJUST NUT |
| 26 | 12-008 | 1 | CUTTER PIN |
| 27 | 04-017 | 2 | BEARING ASSEMBLY |
| 28 | 09-013 | 2 | M18 DRAIN PLUG |
| 29 | 07-022 | 3 | SEALING WASHER |
| 30 | 10-001 | 1 | SPACER |
| 31 | 03-009 | 1 | 19 TOOTH GEAR |
| 32 | 09-011 | 1 | M18 VENT PLUG |
| 33 | 13-004 | 1 | I.D. TAG |
| 34 | 12-021 | 2 | I.D. TAG RIVET |

OLD FLAILMASTER JUMBO

S3150080R/S150147R GEARBOX

(fitted on Jumbo models up to 2005)

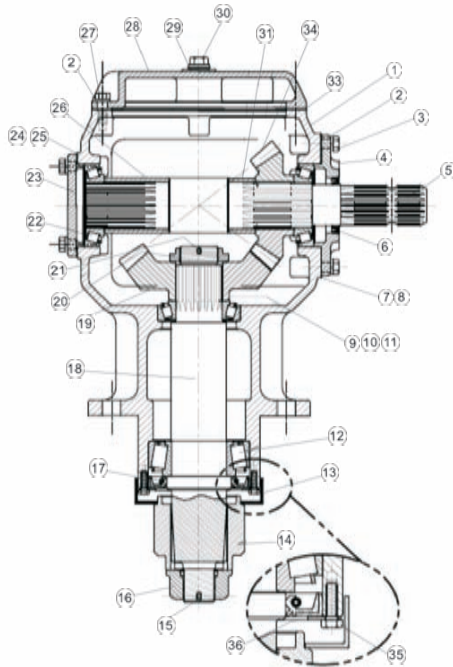


| REF | DESCRIPTION | PART NO. |
|-----|---------------------------|------------|
| 1 | COVER | 190950001 |
| 2 | FRONT BRG CAP | 29001A000 |
| 3 | REAR BRG CAP | 29001A001 |
| 4 | MAIN CASING | 29091A003 |
| 5 | OUTPUT SHAFT | 295404035 |
| 6 | INPUT SHAFT | 295044000 |
| 7 | HUB | 298106403 |
| 8 | LOCK NUT | 298205002 |
| 9 | SPACER | 298405002 |
| 10 | GASKET | 298930000 |
| 11 | GASKET | 298938500 |
| 12 | SEAL PROTECTOR | 298966001 |
| 13 | SET SCREW | 319002200 |
| 14 | SET SCREW | 319012200 |
| 15 | SPLIT PIN | 323004000 |
| 16 | HUB NUT | 330001209 |
| 17 | LOCK WASHER | 335001000 |
| 18 | INPUT SHAFT BRG | 354400045 |
| | OUTPUT SHAFT BRG | 354401065 |
| | OUTPUT SHAFT BRG LOWER | 354401070 |
| 19 | INPUT SHAFT SEAL | 355002045 |
| | OUTPUT SHAFT SEAL | 355000075 |
| 20 | DRAIN BUNG | 373010000 |
| 21 | FILLER BUNG | 373012000 |
| 22 | GEAR SET (540) S3150147R | 448147700R |
| | GEAR SET (1000) S3150080R | 448100708R |

JUMBO GEARBOX

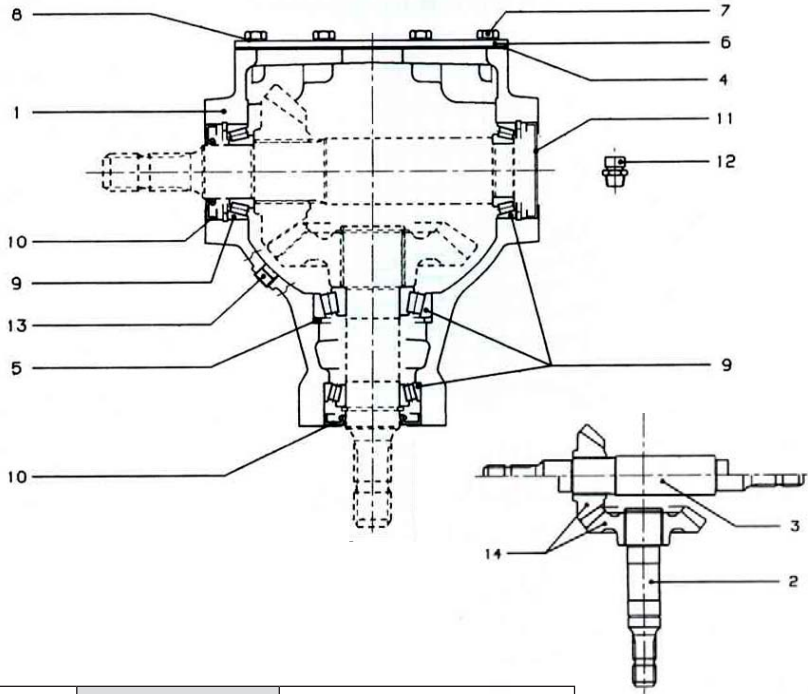
TITAN "OUTER" GEARBOX

01-363 GEARBOX



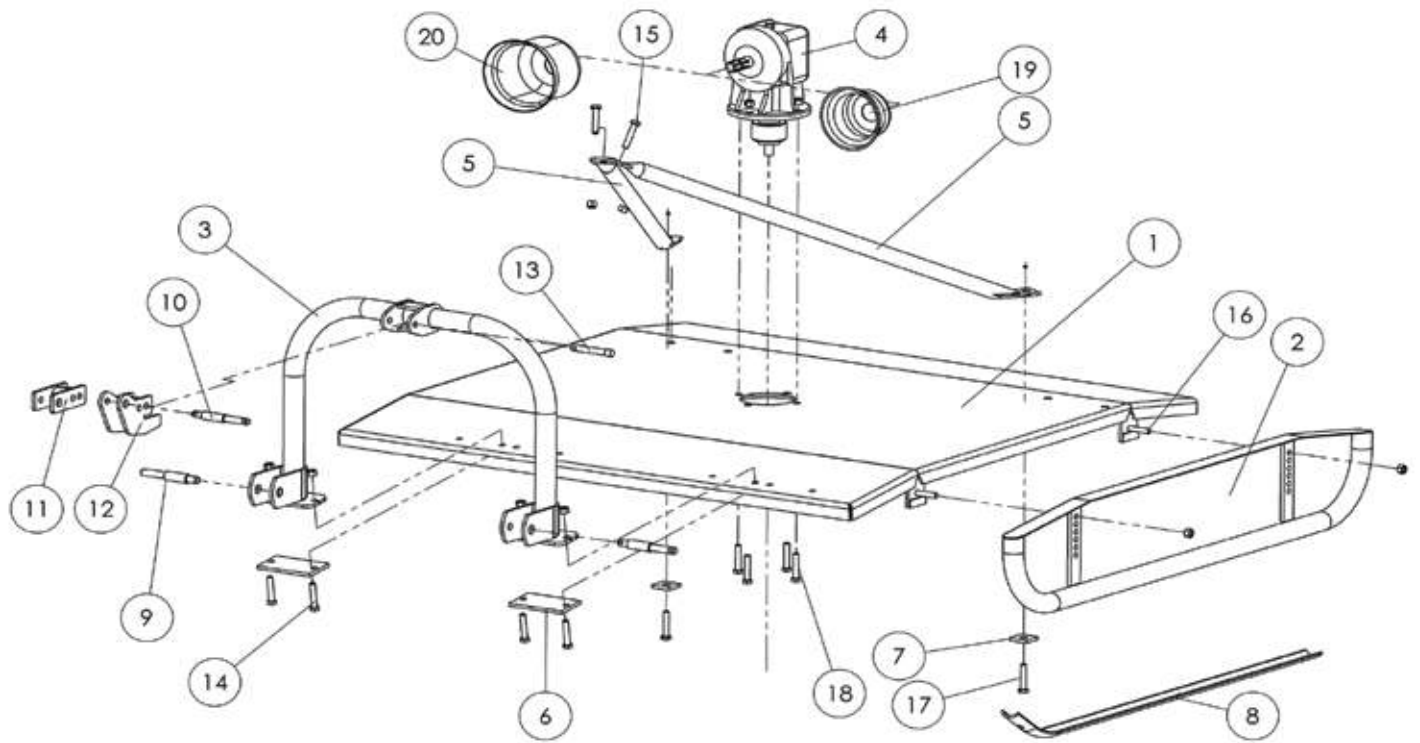
| Item No. | DESCRIPTION | Part No. | Quantity |
|----------|--------------------------------------|----------|----------|
| 1 | Housing | 18-084 | 1 |
| 2 | Ø 10 Lockwasher | 07-001 | 18 |
| 3 | M10 x 1.5 x 30 Hex Head Bolt | 06-003 | 12 |
| 4 | AG-Super-200 Input Cap | 20-093 | 1 |
| 5 | AG-Super-200 Input Shaft | 02-173 | 1 |
| 6 | Input Oil Seal | 05-007 | 1 |
| 7 | AG-Super-200 Input Cap Gasket (0.10) | 08-078 | VAR |
| 8 | AG-Super-200 Input Cap Gasket (0.25) | 08-079 | VAR |
| 9 | SHIM (0.30) | 17-002 | VAR |
| 10 | SHIM (0.40) | 17-001 | VAR |
| 11 | SHIM (0.50) | 17-003 | VAR |
| 12 | Bearing Assembly Ø60xØ110x38.0 | 04-118 | 1 |
| 13 | AG-Super-200 Seal Protector | 19-224 | 1 |
| 14 | Blade Hub Ø2 1/2" | 15-019 | 1 |
| 15 | Cotter Pin | 12-024 | 1 |
| 16 | M36 Hex Slotted Flanged Nut | 11-050 | 1 |
| 17 | Output Oilseal | 05-043 | 1 |
| 18 | AG-Super-200 Output Shaft | 02-174 | 1 |
| 19 | AG-Super-200-25 Tooth Gear | 03-155 | 1 |
| 20 | Bearing Adjusting Nut | 11-012 | 1 |
| 21 | Cotter Pin | 12-008 | 1 |
| 22 | Bearing Assembly Ø50xØ90 | 04-011 | 3 |
| 23 | AG-Super-200 Blank Adjusting Cap | 20-094 | 1 |
| 24 | AG-Super-200 Blank Cap Gasket (0.10) | 08-081 | VAR |
| 25 | AG-Super-200 Blank Cap Gasket (0.25) | 08-082 | VAR |
| 26 | AG-Super-200 Bearing Spacer | 10-105 | 1 |
| 27 | M10 x 1.5 x 30 Hex Head Bolt | 06-012 | 6 |
| 28 | AG-Super-200 Inspection Cover Cap | 20-098 | 1 |
| 29 | Sealing Washer | 07-022 | 2 |
| 30 | M18x1.5 Hex Head Plug | 09-012 | 2 |
| 31 | Input Shaft Spacer | 10-001 | 1 |
| 32 | Dip Stick Breather Assembly | 16-089 | 1 |
| 33 | AG-Super-200 Inspection Cover Gasket | 08-080 | 1 |
| 34 | AG-Super-200-19 Tooth Pinion | 03-154 | 1 |
| 35 | M6 x 1 x 20 Hex Head Bolt | 06-079 | 2 |
| 36 | Super-200 Output Seal Plate | 20-103 | 1 |

2155100G444 (1:1) TITAN-CENTRE GEARBOX

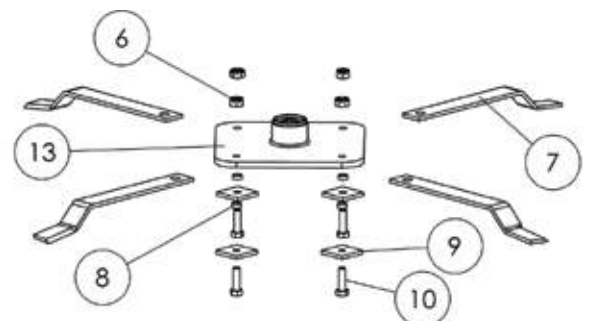
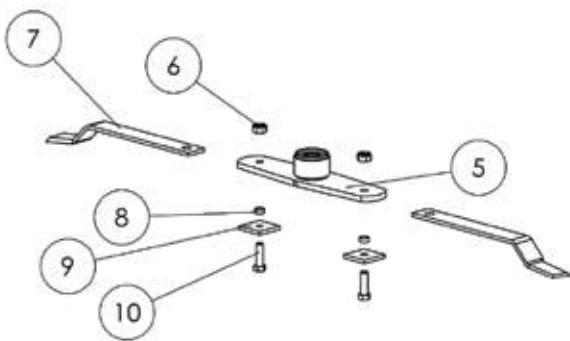
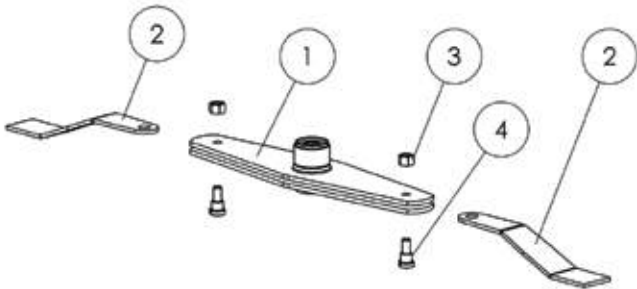


| ITEM | PART NO. | DESCRIPTION |
|------|------------|------------------|
| 2 | 295384009 | Input Shaft |
| 3 | 295383803 | Cross Shaft |
| 4 | 298321400 | Shim |
| 5 | 298411000 | Spacer |
| 6 | 298625400 | Cap |
| 9 | 354400050 | Bearing 30210 |
| | 354401050 | Bearing 32210 |
| | 354405050 | Bearing 30310 |
| | 354407040 | Bearing 30308 |
| 10 | 355001050 | Oil Seal 50mm 1D |
| | 355014040 | Oil Seal 40mm 1D |
| 14 | 448100722R | Gerset |

M Series Rotary Cutter M50, M60, M70, M80



M Series Flail Plate Components



Most common style.

M Series Chassis Components

| ITEM NO | PART NO | DESCRIPTION |
|---------|---------|---------------------------------------|
| | 603 | Main Chassis Deck (M60) |
| | 703 | Main Chassis Deck (M70) |
| 2 | 1838 | Skids (M50/60) LH & RH |
| | 1839 | Skids (M70/80) LH & RH |
| 3 | 124021 | Headstock |
| 4 | 1.265 | Gearbox (M50/60) |
| | 1.028 | Gearbox (M70/80) |
| 5 | 66.01 | Rear Stay (M50/60) |
| | 67.01 | Rear Stay (M70/80) |
| 6 | 64 | Reinforcing Washer (Headstock) |
| 7 | 65.01 | Reinforcing Washer (Stay) |
| 8 | 981193 | Hardened Skid Shoe - Pair - (Weld on) |
| 9 | 5044 | Cat 1 /2 Lower Link Pin |
| 10 | 5043 | Cat 1 /2 Top Link Pin |
| 12 | 1731A | Toplink Toggle (Type 2) |
| 13 | 5074 | Toggle Mount Pin |
| 14-15 | FST | M16 x 60 Bolt, Nylock Nut |
| 16 | FST | Bolt/Nut for skid - Galv |
| 17 | FST | M16 x 50 Bolt, Nylock Nut |
| 18 | FST | Gearbox Mounting Bolt and Nut |
| 19 | 21901 | Standard PTO Cone |
| 20 | 2190409 | PTO Cone for Clutch |

M Series Flail Plate Components

| ITEM NO | PART NO | DESCRIPTION |
|---------|---------|---|
| 1 | 1866 | H D Double Clevis 2 Flail Carrier M70 |
| | 1865 | H D Double Clevis 2 Flail Carrier M80 |
| 2 | 1080LH | Axe Type Flail (100 x 10 x 565) |
| 3 | 377PL | Locking Nut for Flail Bolt |
| 4 | 2443 | Stepped Flail Bolt |
| 5 | 1863 | Flail Carrier M60/M70 (Multifit) |
| 6 | 368B | Cone Lock Nut |
| 7 | 1567 | Stepped Flail M60/70 (65 x 10 x 560) |
| | 1572 | Stepped Flail M50 (65 x 10 x 440) |
| 8 | 1778 | Hardened Flail Bush |
| 9 | 1849J2 | Flail Retaining Square Washer |
| 10 | 188 | Flail Bolt |
| 12 | 188 | Flail Bolt and Locknut |
| 13 | 1861 | Square 4 Flail Carrier M60 & M70 |
| N/S | 188P | Pack of 2 x Flailbolts, Nuts, Bushes and Pins |
| N/S | 2.402 | Split pin for castlenut |

WARRANTY

The manufacturer's obligation under this warranty is limited to correcting without charge at its factory or by one of its authorised Dealers, with the manufacturer's approval, any parts thereof, within 12 months from date of purchase by the original user, and which upon examination shall disclose to the manufacturer's satisfaction to have been originally defective.

Correction of such defect by repair to, or supplying of replacements of defective parts, shall constitute fulfillment of all obligations to the original user: Manufacturer shall not be liable for loss, damage, or expense directly or indirectly from the use of its product or from any other cause. Defective parts must be returned freight paid each way by the purchaser to the manufacturer.

This warranty shall not apply to any parts which must be replaced because of normal wear, or which have been subject to misuse, negligence or accident or which have been repaired or altered outside of the manufacturer's factory, unless authorised by the manufacture. This warranty should not be construed as a free service period during the warranty period.

FIELDMASTER®

• PREMIUM FARM EQUIPMENT •

68 Adams Drive
Pukekohe
Ph: 0800 500 275