

FIELDMASTER®

• PREMIUM FARM EQUIPMENT •

M SERIES

Models: M Sixty, M Seventy



**OWNERS/OPERATORS MANUAL
AND SPARE PARTS LIST**

This manual contains valuable information about your Fieldmaster mower. It has been carefully prepared to give you helpful suggestions for operating, adjusting, servicing repair parts.

Keep this manual in a convenient place for quick and easy reference. Study it carefully. You have purchased a dependable and sturdy implement, but only by proper care and operation can you expect to get the service and long life designed and built into it.

RIGHT-HAND AND LEFT-HAND sides are determined by watching from the tractor side.

Sometime in the future, your implement may need new parts to replace those are worn or broken. If so, go to nearest Fieldmaster dealer and provide them with the model and part number.

Congratulations for purchasing your new Fieldmaster implement.

This implement has been designed and manufactured following all safety and quality requirements needed for a safe and satisfactory use over time.

A careful reading of this manual will allow you to understand this new piece of equipment and will provide you all the tools needed to use it safely.

Proper maintenance and knowledge of the safety rules of use will ensure the best performance and extend the life of the machine.



The Safety Alert Symbol used throughout this manual and on safety decals of the machine indicates the presence of potential hazard to the operator. When you see this symbol, be alert and carefully read the message that follows it.

The Safety Alert Symbol is used in conjunction with following Signal Words, according to the degree of possible injuries that may result operating the implement:

 **DANGER**

Indicates an imminently hazardous situation that, if not avoided, will result in death or serious injury.

 **WARNING**

Indicates a potentially hazardous situation that, if not avoided, could result in death or serious injury, and includes hazards that are exposed when guards are removed. It may also be used to alert against unsafe practices.

 **CAUTION**

Indicates a potentially hazardous situation that, if not avoided, may result in minor or moderate injury. It may also be used to alert against unsafe practices.

IMPORTANT

Indicates instructions or procedures that, if not observed, can cause damage to equipment or environment.

NOTE

Indicates helpful information.

READ, UNDERSTAND, and FOLLOW the safety messages following the Safety Alert Symbol and Signal Words. Failure to comply with safety messages could result in serious bodily injury or death.

1. ABOUT THIS MANUAL

The operator must read the manual for a correct understanding of the hazards that may present when operating the implement, as well as for obtaining optimum performance from the machine.

The manual is part of the machine, it must be kept in good condition and remain with the machine even in case of resale, until its demolition. In case of loss or damage, request a new copy from the Manufacturer, Importer or your Dealer.

The information, descriptions and illustrations in this manual describe the state of the product at the time of its publication, and may not reflect the product in the future.

The Manufacturer reserve the right to make design improvements or changes in specifications without incurring any obligation to install them on units previously sold.

Text, illustrations and drawings of this manual cannot be disclosed or transmitted, in whole or in part, to third parties without the written permission of the Manufacturer. All rights are reserved

SAFETY

Safety is a primary concern in the design and manufacturing of our products. Unfortunately, our efforts to provide safe equipment can be wiped out by a single careless act of an operator.

In addition to the design and configuration of equipment, hazard control and accident prevention are dependent upon the awareness, concern, prudence and proper training of personnel involved in the operation, transport, maintenance and storage of equipment.

It has been said, "The best safety device is an informed careful operator." We ask you to be that kind of operator.

The manufacturer assumes no liability for any damage resulting from not applying the behavioral rules indicated in the manual.

1.1. GENERAL SAFETY INSTRUCTION

DANGER

The machine must be used only by authorized and well-trained operators. The operator must have read and understood the instructions of this manual. They must make adequate preparation for the proper use of the machine and in case of doubt about the use of the machine and/or the interpretation of this manual the operator must contact the Manufacturer or the Dealer immediately.

WARNING

The manual must always remain with the machine. In case of loss or damage, request a new copy from the Manufacturer or your Dealer.

WARNING

Follow strictly the rules prescribed by the safety pictograms applied to the machine.

WARNING

Be sure that all safety pictograms are legible. If pictograms are worn, they must be replaced with others obtained from the Manufacturer and placed in the position indicated by this manual.

DANGER

Before using the machine, make sure that all safety devices are installed and in good working conditions. In case of damages of shields, replace them immediately.

DANGER

Is absolutely forbidden to remove or alter safety devices.

DANGER

Before starting and during operation of the implement make sure there are no people or animals in the area of operation: the machine can project material from the back, front or side, with risks of serious injury or death.

DANGER

Pay maximum attention to avoid any accidental contact with rotating parts of the machine.

DANGER

During operation, adjustment, maintenance, repairing or transportation of the machine, the operator must always use appropriate Personal Protective Equipment (PPE).

This includes but is not limited to the following -

- A hard hat
- Protective shoes with slip resistant soles
- Protective goggles, glasses or face shield
- Heavy gloves
- Protective clothing
- Hair net or similar to contain long hair
- Suitable ear protection (ear muffs, ear plugs)

 DANGER

Do not operate the implement while wearing loose-fitting clothing that can give rise to entanglement in parts of the machine.

 DANGER

Do not operate the implement when tired, not in good condition or under the influence of alcohol or drugs.

 CAUTION

If the use of the machine is required at night or in conditions of reduced visibility, use the lighting system of the tractor and possibly an auxiliary lighting system.

1.2. EQUIPMENT SAFETY INSTRUCTIONS

 WARNING

Use the implement for its intended purpose only. Improper use can damage the implement and cause serious injury to persons, animals, or death.

 DANGER

The machine should be used by a single operator driving the tractor.

 WARNING

Any unauthorized modification of the machine may cause problems in safety and relieves the Manufacturer from any liability for damages or injuries that may result in operators, third parties and objects.

 WARNING

Before using the machine, familiarize yourself with its controls and its working capacity.

 WARNING

Do not leave the implement unattended with tractor engine running.

 WARNING

Do not operate implement on unstable (muddy or sandy) or rocky ground.

 WARNING

Keep the machine clean from debris and foreign objects which may damage functioning or cause injury.

 WARNING

Do not use the machine if the category of the connecting pins of the implement does not match that of the tractor hitch system.

 WARNING

Do not use the machine with missing bolts, screws, pins, safety guards or safety pins.

 WARNING

Never use the machine to transport or lift people, animals or objects

 WARNING

Make certain that at least 20% of the total weight (tractor, implement and ballast) is on the front axle of the tractor to ensure stability. Add front ballast if required.

 WARNING

Before engaging the tractor PTO, make sure the tractor PTO speed is set as required for this implement (540 rpm or 1000rpm). Do not over speed PTO or machine breakage may result.

 DANGER

Do not operate the implement if the driveshaft is damaged. The driveshaft could break during operation, causing serious injury or death. Remove the driveshaft and repair or replace it before continuing operation.

1.3. OPERATING SAFETY INSTRUCTIONS

 WARNING

Before using the machine, be sure to have cleared the operating area from obstacles (stones, branches, debris, etc...). Mark all the obstacles that cannot be removed (e.g. by means flags).

 DANGER

Never engage the tractor PTO in the presence of people close to the driveshaft. The body, hair or clothing of a person can get caught in rotating parts, causing serious injury or death.

 DANGER

Before engaging the PTO and during all operations, make sure that no person or animal is in the immediate area of action of the machine. Never use the implement if people are in the working area.

 DANGER

It's absolutely forbidden to stand near an implement like this when parts are moving.

 WARNING

The operator must operate implement (lifting/lowering) only from the driving seat of the tractor. Do not perform lifting maneuvers on the side or behind the tractor.

 WARNING

Before making changes in direction, turns or going in reverse, slightly lift the implement off the ground after disengaging the power take-off, to avoid damage to the machine.

 DANGER

In presence of steep slopes the action of this machine may cause instability of the tractor with a risk of tipping off which a consequence may be serious injury or death hazard. Consult the manual for the tractor to determine the maximum slope that the tractor is able to deal with.

 DANGER

Always disengage the PTO before raising the implement and never engage the PTO with the implement raised. The machine might throw objects at high speed, causing serious injury or death.

 WARNING

Never leave the driver's seat when the tractor is turned on. Before leaving the tractor, lower the implement to the ground, disengage the PTO, insert the parking brake, stop the engine and remove the key from the control panel.

 DANGER

The PTO shields of the tractor and implement side, the driveshaft shielding and the driveshaft retaining chains must be properly installed and in good condition, to avoid the risk of entanglement with serious injury or death.

 DANGER

Before engaging the PTO of the tractor, always make sure that the drive shaft is mounted in the correct direction, and that its clamping elements are properly connected both to tractor side and to Rotary Hoe side.

 WARNING

Stop operating immediately if blades strike a foreign object. Repair all damage and make certain rotor, blades, couplings, PTO shaft and bolts are in good condition before resuming operation.

 WARNING

Always disengage the tractor PTO when the driveshaft exceed an angle of 10 degrees up or down while operating. An excessive angle with driveshaft rotating can break the driveshaft and cause flying projectiles.

 CAUTION

Avoid clutch overheating and wearing caused by too long or frequent slipping of the clutch, since it can damage the clutch components. Before checking the clutch, make sure it has cooled. Clutch could be extremely hot and cause a severe burn.

 CAUTION

Prolonged use of the implement can cause overheating of the gearbox. Do not touch the gearbox during use and immediately after, it could be extremely hot and cause a severe burn.

 WARNING

All repairs to the implement must be performed by qualified and trained operators, with the tractor engine off, the PTO disengaged, the implement lowered to the ground or on security stands, the ignition key off and the parking brake set.

1.4. TRANSPORTING SAFETY INSTRUCTIONS

 WARNING

Before transporting, determine the stopping characteristics of the tractor and implement.

 WARNING

Transport only at speeds where you can maintain control of the equipment.

 WARNING

When driving on roads, the implement must be in transport position, adequately raised from the road surface, with tractor lifting hydraulics locked so that the implement cannot be lowered accidentally.

 DANGER

The implement may be wider than the tractor. Pay attention to transporting for people, animals, buildings/sheds and/or other obstacles.

 WARNING

When turning, use extreme care and reduce tractor speed.

 WARNING

Do not operate the tractor with weak or faulty brakes or worn tires.

 CAUTION

Always use tractor lighting system and auxiliary lighting system for an adequate warning to operators of other vehicles, especially when transporting at night or in conditions of reduced visibility.

 DANGER

In the case of lifting this implement, make sure that any lifting device is suitable to perform the operation safely, and use only the lifting points prescribed on Rotary Hoe.

1.5. MAINTENANCE SAFETY INSTRUCTIONS

 WARNING

All maintenance and repair operations must be performed by qualified and trained operators, with the tractor engine off, the PTO disengaged, the implement lowered to the ground or on security stands, the ignition key off and the parking brake set.

 WARNING

Perform repairs and replacements part should only be original spare parts provided by the manufacturer, importer or your dealer.

 DANGER

Perform maintenance operations using appropriate Personal Protective Equipment (protective eyeglasses, hard hat, hearing protection, safety shoes, overall and work gloves, filter mask).

 CAUTION

Before any maintenance operation, make sure that the parts which become hot during use (friction clutch, gearbox...) have cooled.

 WARNING

Do not perform repairs that you do not know. Always follow the manual instructions and in case of doubt contact the Manufacturer or your dealer.

 DANGER

Do not swallow fuels or lubricants. In case of accidental contact with eyes, rinse well with water and consult a doctor.

1.6. STORAGE SAFETY INSTRUCTIONS

 WARNING

Never leave the tractor unattended with the implement in the lifted position. Accidental operation of lifting lever or a hydraulic failure may cause a sudden drop of the unit which may result in injury/death.

 DANGER

Following the operation, or before unhooking the implement, stop the tractor, set the brakes, disengage the PTO, lower the attached implement to the ground, shut off the engine, remove the ignition key and wait for all moving parts to stop.

 WARNING

Make sure all parked machines are on a hard, level surface and engage all safety devices.

 CAUTION

Place support blocks under implement as needed to prevent the unit from tipping over onto a child and/or an adult. An implement that tips over can result in injury or death.

 CAUTION

Store the unit in an area away from human activity.

1. SAFETY LABELS

The safety labels applied on the machine give fundamental information for using the machine safely.

Make sure safety labels are in good conditions. If pictograms are worn, they must be replaced with others obtained from the manufacturer and placed in the position indicated by this manual.

Make sure the safety labels are legible. If necessary, wipe them by a cloth, with soap and water.

5.1. STARTUP

Before the startup and before each use, perform the following pre-operation inspections and service of the implement:

- Check that the implement has no damaged functional parts and has all mechanical parts are good condition. Repair and / or replace the damaged parts;
- check that the implement has no missing parts (pins, safety pins, plugs oil ...). Restore the missing parts;
- check that all guards and safety devices have no damages and are properly positioned. Repair and / or replace the damaged shields, restore the correct position;
- verify that the PTO driveshaft is properly installed (see section: Connection of the drive shaft);
- check that the driveshaft clutch is in good condition, and that its components are not subject to "sticking" (see section: Maintenance / Driveline);
- check the presence of lubricant in all greasing points of the implement (driveshaft, supports...)
- Check for oil leaks from the gearbox or the transmission side cover. Identify the reason of loss, then repair and / or replace the damaged components;
- check the correct oil level in the gearboxes
- check that blades are not excessively worn and the relating hardware is correctly tightened
- check that all hardware (nuts, bolts, etc.) are properly tightened.
- check that all safety decals are correctly positioned, in good condition and legible. Replace any damaged decals;
- check that there is no constraints that may prevent the movement of equipment. Remove any constraint.

Before the startup and before each use, make the following checks on the operating area you intend to operate:

- check that area is clear of foreign objects (rocks, branches or debris). Remove any obstacle and visibly highlight obstacles that cannot be removed (e.g. with flags);
- make sure that in the area you intend to operate there are no people or animals;
- make sure the soil to be worked is not too grassy, muddy, sandy or rocky.

WARNING

Before conducting the above inspections and service, make sure the tractor engine is off, all rotation parts are completely stopped and the tractor is in park with the parking brake

engaged. Make sure the implement is resting on the ground or securely blocked up and the tractor lifting hydraulics locked.

Once all the checks above have been done, start the tractor and the implement as follows:

- start the tractor and engage the tractor PTO at low rpm, making sure that the implement is NOT in the raised position but close to the ground, then increase speed engine until to 540 or 1000 rpm (dependent on which size model you have purchased)
- lower the implement on the ground and simultaneously start driving the tractor forward at low speed. Subsequently, increase the ground speed depending on ground conditions;
- If the outside temperature is very cold, it's recommended to engage the PTO and have the implement operate at low speed (with the tractor stationary) to warm oil and lubricate parts;
- Drive for a while operating the implement then stop the tractor to check the quality of the work performed. If you need to get off the tractor, reduce engine speed and disengage PTO, set the parking brake, stop engine and remove the ignition key.

Fitting to the Tractor

When delivery of the machine is taken it will be found that it is almost ready to go into operation. Adjust the length of the top link so that the machine sits squarely on fiat ground, with the floating toggle link on a 45^o angle pointing down - (This means the toggle will float forwards or backwards equal amounts, to allow the machine to 'float' on undulating ground - pivoting on the lower linkage pins.

Fit stabiliser bars or chains.

The top and lower linkage pins are a 'dual category' pin designed for both CAT I and CAT II tractors. Select the appropriate size and secure in the clevis with lynch pins provided.

Fit the driveshaft securely to the tractor P.T.O and Gearbox input shaft. Ensure that both spl med yokes are securely fastened to the splined shaft on both the tractor and the mower. Check that the drive shaft is not too extended or-compressed when the machine is raised or lowered. See notes on drive shaft.

Adjust the height of cut simply by raising or lowering skids. The higher positions for use in pasture topping or rubbish cutting are by means of the bolt holes nearer the top of the skids. For the finer, lower cutting adjustments lower bolt holes should be used.

The Telescope Drive Shaft

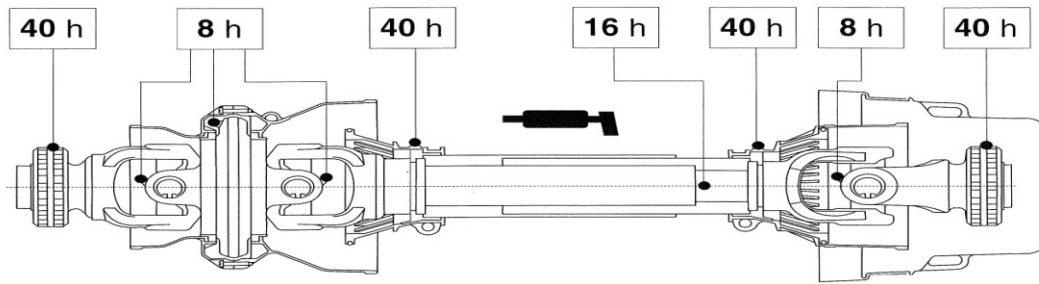
After hitching up, the telescopic drive shaft can be attached. Careful attention should be given because only correct fitting of this unit can give the best service.

There is a wide range of tractors and the horizontal distance between the power take off shaft and the drawbar varies considerably. A specific instruction for each would require extensive research.

Check the driveshaft length to ensure shaft does not "bottom-out" when machine is raised.

Should your driveshaft need shortening, simply remove the plastic safety covers and cut the steel tubing to the required length with a saw, remove any rough edges or burrs, then refit the safety covers.

Ensure that both splined yokes are securely fastened to the splined shaft on both the tractor and the mower.



Routine Lubrication and Maintenance

The greasing and oiling is important and the following guide will help to keep the machine in good condition.

1. Grease the telescoping sliding shaft tubes of the driveshaft once per day. The shaft should be pulled apart to be sure of sufficient application of grease.
2. Grease the driveshaft cross and plastic safety cover bearings once per day.
3. Check Gearbox once per week. SAE 90 EP gear lube is recommended.
4. Check cutting flails each time you use the machine. If any signs of excessive or uneven wear, replace immediately.

Points to Remember

- * Fast forward speed leaves longer stubble.
- * Maintain skids parallel with each other always adjusting the same amount.
- * High P.T.O revs will slightly lift blades.
- * Best performance from your topper will be gained when the tractor P.T.O is maintained between 540 and 600 r.p.m.

Operation

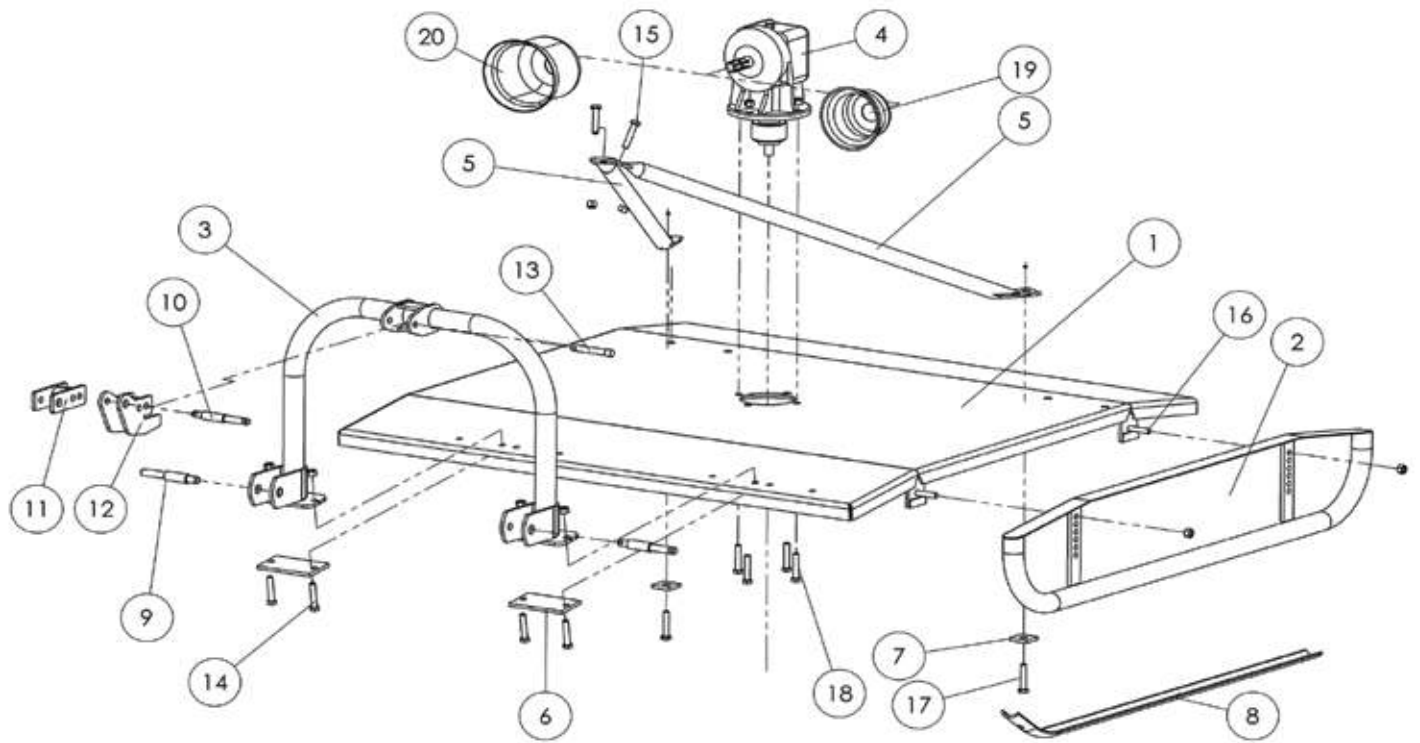
Your M60/M70 can be used for light scrub and rush cutting and pasture topping with little know how on behalf of the operator.

Firstly in heavy cutting the M60/M70 must be used in the top hole of your skids to give maximum clearance. In tackling light scrub or other heavy growth, the tractor must first knock down the material to be cut, preferably with a bar on the front of the tractor, or can be reversed with the M60/M70 slightly raised on the 3 point linkage for the first cut. P.T.O. revs must be always maintained and never allowed to go below 540 r.p.m. Therefore the forward speed of the tractor must be as low as possible in the heaviest conditions to maintain the maximum speed on the M60/M70 rotor while cutting, remembering the M60/M70 is designed to saw into the material, not act as a grubber. After the first cut, and cut material is rotting away, then a second go into the stumps with the machine slightly lower will do an excellent cleanup job.

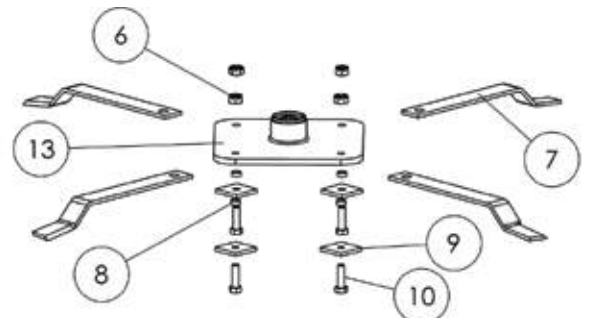
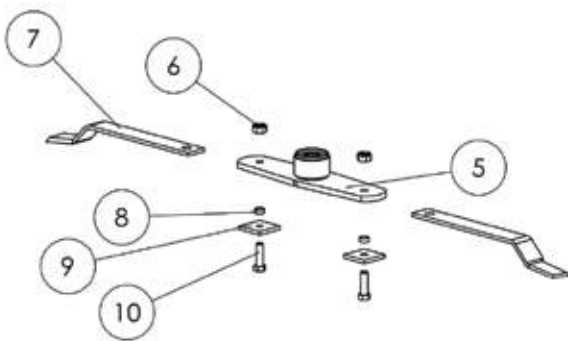
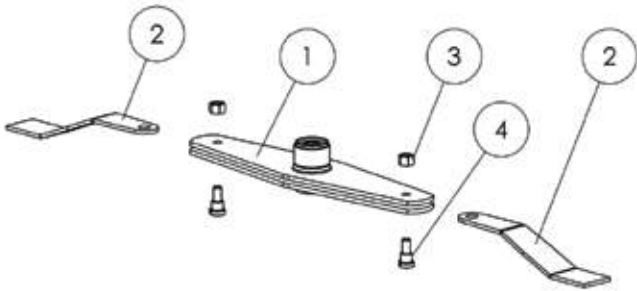
Slashing rushes with the M60/M70 is different from scrub clearing. The rushes are heavy; go in at the highest position, making sure the blades are sharp, then in heavy rushes allow a week or two for the sun and weather to get into the centre pitch of the rush head or base, then lower the blades quite low, engage the tractor in bottom gear, and you will find the flailplate will remove a lot of the centre dead material in the rushes and give a good clean cut. If this is maintained and drainage effective well stocked rushes can be largely eliminated.

If your M60/M70 has a rear roller fitted, best results are achieved by 'carrying' the machine on the lower linkage pins on the tractor arms, (with the top link toggle loose) and run the machine on the roller. (ie **not** on the skids) NEVER USE THE FLOATING TOGGLE IN FIXED POSITION WITH A REAR ROLLER FITTED.

M Series Rotary Cutter M60, M70, M80



M Series Flail Plate Components



Most common style.

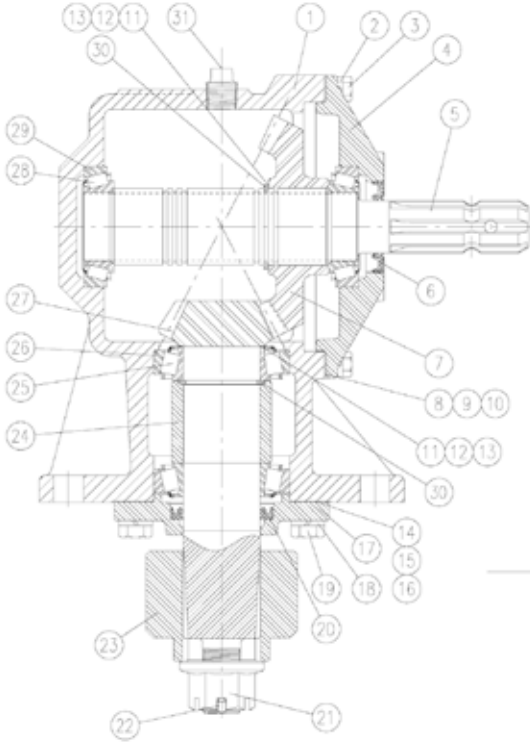
M Series Chassis Components

ITEM NO	PART NO	DESCRIPTION
	603	Main Chassis Deck (M60)
	703	Main Chassis Deck (M70)
2	1838	Skids (M50/60) LH & RH
	1839	Skids (M70/80) LH & RH
3	124021	Headstock
4	1.265	Gearbox (M50/60)
	1.028	Gearbox (M70/80)
5	66.01	Rear Stay (M50/60)
	67.01	Rear Stay (M70/80)
6	64	Reinforcing Washer (Headstock)
7	65.01	Reinforcing Washer (Stay)
8	981193	Hardened Skid Shoe - Pair - (Weld on)
9	5044	Cat 1 /2 Lower Link Pin
10	5043	Cat 1 /2 Top Link Pin
12	1731A	Toplink Toggle (Type 2)
13	5074	Toggle Mount Pin
14-15	FST	M16 x 60 Bolt, Nylock Nut
16	FST	Bolt/Nut for skid - Galv
17	FST	M16 x 50 Bolt, Nylock Nut
18	FST	Gearbox Mounting Bolt and Nut
19	21901	Standard PTO Cone
20	2190409	PTO Cone for Clutch

M Series Flail Plate Components

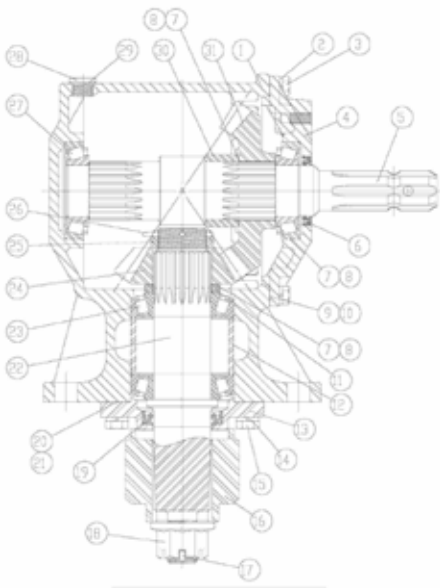
ITEM NO	PART NO	DESCRIPTION
1	1866	H D Double Clevis 2 Flail Carrier M70
	1865	H D Double Clevis 2 Flail Carrier M80
2	1080LH	Axe Type Flail (100 x 10 x 565)
3	377PL	Locking Nut for Flail Bolt
4	2443	Stepped Flail Bolt
5	1863	Flail Carrier M60/M70 (Multifit)
6	368B	Cone Lock Nut
7	1567	Stepped Flail M60/70 (65 x 10 x 560)
	1572	Stepped Flail M50 (65 x 10 x 440)
8	1778	Hardened Flail Bush
9	1849J2	Flail Retaining Square Washer
10	188	Flail Bolt
12	188	Flail Bolt and Locknut
13	1861	Square 4 Flail Carrier M60 & M70
N/S	188P	Pack of 2 x Flailbolts, Nuts, Bushes and Pins
N/S	2.402	Split pin for castlenut

1.265 (1:1.93) M60, Outer Gearmower, TM/PM Gearbox



DET.	PART NO	QTY	DESCRIPTION
1	18.027	1	Housing
2	7.001	8	dia 10 Lockwasher
3	6.017	8	Hex Head Cap Screw
4	20.026	1	Input Cap
5	2.054	1	Input Shaft
6	5.02.112..12	1	Input Oil Seal
7	3.113	1	29 Tooth Gear
8	8.006	VAR	Input Cap Gasket (0.15)
12	17.002	VAR	Shim (0.30)
13	17.003	VAR	Shim (0.50)
14	8.001	VAR	Output Cap Gasket (0.15)
15	8.002	VAR	Output Cap Gasket (0.25)
17	20.025	1	Output Cap
18	7.01	4	Lockwasher
19	FST	4	Hex Head Cap Screw
20	5.04.133.34	1	Output Oil Seal
21	FST	1	1" UNF Nyloc Nut Hex
22	2.4.2	1	Cotter Pin
23	15.006	1	2 1/2" Blade Hub
24	10.083	1	Output Spacer
25	4.01.101.13	2	Bearing Cone
26	4.01.102.09	2	Bearing Cup
27	3.112	1	15 Tooth Output Shaft & Pinion
28/29	4.007/8	2	Bearing Cone and Cup
30	21.001	2	Retaining Ring
31	9.002	2	1/2"-14 NPT Level Plug
32	9.008	1	1/2"-14 NPT Vent Plug

1.028 (1:1.46) M70/80 & XHD Outer GB



DET	PART NO	QTY	DESCRIPTION
1	18.001	1	Housing
2	7.001	8	dia 10 Lockwasher
3	6.003	8	M10 x 1.5 30 Hex Head Cap Screw
4	20.001	1	Input Cap
5	2.002	1	Input Shaft
6		1	Input Seal
7	17.001	VAR	Gear Adjusting Shim (0.30)
8	17.003	VAR	Gear Adjusting Shim (0.50)
9	8.006	VAR	Input Cap Gasket (0.10)
11	10.016	1	Gear Mounting Spacer
12	10.003	1	Output Spacer
13	20.002	1	Output Cap
14	7.002	4	dia 12 Lockwasher
15	FST	4	M12 x M1.75 x 38 hex head Cap Screw
16	15.002	1	2 1/2" Blade Hub
17	12.003	1	Cotter Pin
18	FST	1	1" UNF Hex Nyloc Nut
19	5.008	1	Output Oil Seal
20	8.001	VAR	Output Cap Gasket (0.10)
21	8.002	VAR	Output Cap Gasket (0.25)
22	2.004	1	Output Shaft
23	4.011	2	Bearing Assembly
24	3.008	1	13 Tooth Gear
25	11.012	1	Bearing Adjusting Nut
26	12.008	1	Cutter Pin
27	4.017	2	Bearing Assembly
28	9.013	2	M18 Drain Plug
29	7.022	3	Sealing Washer
30	10.001	1	Spacer
32	3.009	1	19 Tooth Gear
33	9.011	1	M18 Vent Plug

WARRANTY

The manufacturer's obligation under this warranty is limited to correcting without charge at its factory or by one of its authorised dealers, with the manufacturer's approval, any parts there of, within 12 months from date of purchase by the original user, and which upon examination shall disclose to the manufacturer's satisfaction to have been originally defective.

Correction of such defect by repair to, or supplying of replacements of defective parts, shall constitute fulfillment of all obligations to the original user: Manufacturer shall not be liable for loss, damage, or expense directly or indirectly from the use of its product or from any other cause. Defective parts must be returned freight paid each way by the purchaser to the manufacturer.

This warranty shall not apply to any parts which must be replaced because of normal wear, or which have been subject to misuse, negligence or accident or which have been repaired or altered outside of the manufacturer's factory, unless authorised by the manufacture. This warranty should not be construed as a free service period during the warranty period.

FIELDMASTER®

• PREMIUM FARM EQUIPMENT •

68 Adams Drive
Pukekohe
Ph: 0800 500 275