

FIELDMASTER®

• PREMIUM FARM EQUIPMENT •

SABRE 1200 / 1500 ROTARY SLASHER / TOPPER

Models: SABRE



**OWNERS/OPERATORS MANUAL
AND SPARE PARTS LIST**

This manual contains valuable information about your Fieldmaster mower. It has been carefully prepared to give you helpful suggestions for operating, adjusting, servicing repair parts.

Keep this manual in a convenient place for quick and easy reference. Study it carefully. You have purchased a dependable and sturdy implement, but only by proper care and operation can you expect to get the service and long life designed and built into it.

RIGHT-HAND AND LEFT-HAND sides are determined by watching from the tractor side.

Sometime in the future, your implement may need new parts to replace those are worn or broken. If so, go to nearest Fieldmaster dealer and provide them with the model and part number.

Congratulations for purchasing your new Fieldmaster implement.

This implement has been designed and manufactured following all safety and quality requirements needed for a safe and satisfactory use over time.

A careful reading of this manual will allow you to understand this new piece of equipment and will provide you all the tools needed to use it safely.

Proper maintenance and knowledge of the safety rules of use will ensure the best performance and extend the life of the machine.



The Safety Alert Symbol used throughout this manual and on safety decals of the machine indicates the presence of potential hazard to the operator. When you see this symbol, be alert and carefully read the message that follows it.

The Safety Alert Symbol is used in conjunction with following Signal Words, according to the degree of possible injuries that may result operating the implement:

 **DANGER**

Indicates an imminently hazardous situation that, if not avoided, will result in death or serious injury.

 **WARNING**

Indicates a potentially hazardous situation that, if not avoided, could result in death or serious injury, and includes hazards that are exposed when guards are removed. It may also be used to alert against unsafe practices.

 **CAUTION**

Indicates a potentially hazardous situation that, if not avoided, may result in minor or moderate injury. It may also be used to alert against unsafe practices.

IMPORTANT

Indicates instructions or procedures that, if not observed, can cause damage to equipment or environment.

NOTE

Indicates helpful information.

READ, UNDERSTAND, and FOLLOW the safety messages following the Safety Alert Symbol and Signal Words. Failure to comply with safety messages could result in serious bodily injury or death.

1. ABOUT THIS MANUAL

The operator must read the manual for a correct understanding of the hazards that may present when operating the implement, as well as for obtaining optimum performance from the machine.

The manual is part of the machine, it must be kept in good condition and remain with the machine even in case of resale, until its demolition. In case of loss or damage, request a new copy from the Manufacturer, Importer or your Dealer.

The information, descriptions and illustrations in this manual describe the state of the product at the time of its publication, and may not reflect the product in the future.

The Manufacturer reserve the right to make design improvements or changes in specifications without incurring any obligation to install them on units previously sold.

Text, illustrations and drawings of this manual cannot be disclosed or transmitted, in whole or in part, to third parties without the written permission of the Manufacturer. All rights are reserved

SAFETY

Safety is a primary concern in the design and manufacturing of our products. Unfortunately, our efforts to provide safe equipment can be wiped out by a single careless act of an operator.

In addition to the design and configuration of equipment, hazard control and accident prevention are dependent upon the awareness, concern, prudence and proper training of personnel involved in the operation, transport, maintenance and storage of equipment.

It has been said, "The best safety device is an informed careful operator." We ask you to be that kind of operator.

The manufacturer assumes no liability for any damage resulting from not applying the behavioral rules indicated in the manual.

1.1. GENERAL SAFETY INSTRUCTION

DANGER

The machine must be used only by authorized and well-trained operators. The operator must have read and understood the instructions of this manual. They must make adequate preparation for the proper use of the machine and in case of doubt about the use of the machine and/or the interpretation of this manual the operator must contact the Manufacturer or the Dealer immediately.

WARNING

The manual must always remain with the machine. In case of loss or damage, request a new copy from the Manufacturer or your Dealer.

WARNING

Follow strictly the rules prescribed by the safety pictograms applied to the machine.

WARNING

Be sure that all safety pictograms are legible. If pictograms are worn, they must be replaced with others obtained from the Manufacturer and placed in the position indicated by this manual.

DANGER

Before using the machine, make sure that all safety devices are installed and in good working conditions. In case of damages of shields, replace them immediately.

DANGER

Is absolutely forbidden to remove or alter safety devices.

DANGER

Before starting and during operation of the implement make sure there are no people or animals in the area of operation: the machine can project material from the back, front or side, with risks of serious injury or death.

DANGER

Pay maximum attention to avoid any accidental contact with rotating parts of the machine.

DANGER

During operation, adjustment, maintenance, repairing or transportation of the machine, the operator must always use appropriate Personal Protective Equipment (PPE).

This includes but is not limited to the following -

- A hard hat
- Protective shoes with slip resistant soles
- Protective goggles, glasses or face shield
- Heavy gloves
- Protective clothing
- Hair net or similar to contain long hair
- Suitable ear protection (ear muffs, ear plugs)

 DANGER

Do not operate the implement while wearing loose-fitting clothing that can give rise to entanglement in parts of the machine.

 DANGER

Do not operate the implement when tired, not in good condition or under the influence of alcohol or drugs.

 CAUTION

If the use of the machine is required at night or in conditions of reduced visibility, use the lighting system of the tractor and possibly an auxiliary lighting system.

1.2. EQUIPMENT SAFETY INSTRUCTIONS

 WARNING

Use the implement for its intended purpose only. Improper use can damage the implement and cause serious injury to persons, animals, or death.

 DANGER

The machine should be used by a single operator driving the tractor.

 WARNING

Any unauthorized modification of the machine may cause problems in safety and relieves the Manufacturer from any liability for damages or injuries that may result in operators, third parties and objects.

 WARNING

Before using the machine, familiarize yourself with its controls and its working capacity.

 WARNING

Do not leave the implement unattended with tractor engine running.

 WARNING

Do not operate implement on unstable (muddy or sandy) or rocky ground.

 WARNING

Keep the machine clean from debris and foreign objects which may damage functioning or cause injury.

 WARNING

Do not use the machine if the category of the connecting pins of the implement does not match that of the tractor hitch system.

 WARNING

Do not use the machine with missing bolts, screws, pins, safety guards or safety pins.

 WARNING

Never use the machine to transport or lift people, animals or objects

 WARNING

Make certain that at least 20% of the total weight (tractor, implement and ballast) is on the front axle of the tractor to ensure stability. Add front ballast if required.

 WARNING

Before engaging the tractor PTO, make sure the tractor PTO speed is set as required for this implement (540 rpm or 1000rpm). Do not over speed PTO or machine breakage may result.

 DANGER

Do not operate the implement if the driveshaft is damaged. The driveshaft could break during operation, causing serious injury or death. Remove the driveshaft and repair or replace it before continuing operation.

1.3. OPERATING SAFETY INSTRUCTIONS

 WARNING

Before using the machine, be sure to have cleared the operating area from obstacles (stones, branches, debris, etc...). Mark all the obstacles that cannot be removed (e.g. by means flags).

 DANGER

Never engage the tractor PTO in the presence of people close to the driveshaft. The body, hair or clothing of a person can get caught in rotating parts, causing serious injury or death.

 DANGER

Before engaging the PTO and during all operations, make sure that no person or animal is in the immediate area of action of the machine. Never use the implement if people are in the working area.

 DANGER

It's absolutely forbidden to stand near an implement like this when parts are moving.

 WARNING

The operator must operate implement (lifting/lowering) only from the driving seat of the tractor. Do not perform lifting maneuvers on the side or behind the tractor.

 WARNING

Before making changes in direction, turns or going in reverse, slightly lift the implement off the ground after disengaging the power take-off, to avoid damage to the machine.

 DANGER

In presence of steep slopes the action of this machine may cause instability of the tractor with a risk of tipping off which a consequence may be serious injury or death hazard. Consult the manual for the tractor to determine the maximum slope that the tractor is able to deal with.

 DANGER

Always disengage the PTO before raising the implement and never engage the PTO with the implement raised. The machine might throw objects at high speed, causing serious injury or death.

 WARNING

Never leave the driver's seat when the tractor is turned on. Before leaving the tractor, lower the implement to the ground, disengage the PTO, insert the parking brake, stop the engine and remove the key from the control panel.

 DANGER

The PTO shields of the tractor and implement side, the driveshaft shielding and the driveshaft retaining chains must be properly installed and in good condition, to avoid the risk of entanglement with serious injury or death.

 DANGER

Before engaging the PTO of the tractor, always make sure that the drive shaft is mounted in the correct direction, and that its clamping elements are properly connected both to tractor side and to Rotary Hoe side.

 WARNING

Stop operating immediately if blades strike a foreign object. Repair all damage and make certain rotor, blades, couplings, PTO shaft and bolts are in good condition before resuming operation.

 WARNING

Always disengage the tractor PTO when the driveshaft exceed an angle of 10 degrees up or down while operating. An excessive angle with driveshaft rotating can break the driveshaft and cause flying projectiles.

 CAUTION

Avoid clutch overheating and wearing caused by too long or frequent slipping of the clutch, since it can damage the clutch components. Before checking the clutch, make sure it has cooled. Clutch could be extremely hot and cause a severe burn.

 CAUTION

Prolonged use of the implement can cause overheating of the gearbox. Do not touch the gearbox during use and immediately after, it could be extremely hot and cause a severe burn.

 WARNING

All repairs to the implement must be performed by qualified and trained operators, with the tractor engine off, the PTO disengaged, the implement lowered to the ground or on security stands, the ignition key off and the parking brake set.

1.4. TRANSPORTING SAFETY INSTRUCTIONS

 WARNING

Before transporting, determine the stopping characteristics of the tractor and implement.

 WARNING

Transport only at speeds where you can maintain control of the equipment.

 WARNING

When driving on roads, the implement must be in transport position, adequately raised from the road surface, with tractor lifting hydraulics locked so that the implement cannot be lowered accidentally.

 DANGER

The implement may be wider than the tractor. Pay attention to transporting for people, animals, buildings/sheds and/or other obstacles.

 WARNING

When turning, use extreme care and reduce tractor speed.

 WARNING

Do not operate the tractor with weak or faulty brakes or worn tires.

 CAUTION

Always use tractor lighting system and auxiliary lighting system for an adequate warning to operators of other vehicles, especially when transporting at night or in conditions of reduced visibility.

 DANGER

In the case of lifting this implement, make sure that any lifting device is suitable to perform the operation safely, and use only the lifting points prescribed on Rotary Hoe.

1.5. MAINTENANCE SAFETY INSTRUCTIONS

 WARNING

All maintenance and repair operations must be performed by qualified and trained operators, with the tractor engine off, the PTO disengaged, the implement lowered to the ground or on security stands, the ignition key off and the parking brake set.

 WARNING

Perform repairs and replacements part should only be original spare parts provided by the manufacturer, importer or your dealer.

 DANGER

Perform maintenance operations using appropriate Personal Protective Equipment (protective eyeglasses, hard hat, hearing protection, safety shoes, overall and work gloves, filter mask).

 CAUTION

Before any maintenance operation, make sure that the parts which become hot during use (friction clutch, gearbox...) have cooled.

 WARNING

Do not perform repairs that you do not know. Always follow the manual instructions and in case of doubt contact the Manufacturer or your dealer.

 DANGER

Do not swallow fuels or lubricants. In case of accidental contact with eyes, rinse well with water and consult a doctor.

1.6. STORAGE SAFETY INSTRUCTIONS

 WARNING

Never leave the tractor unattended with the implement in the lifted position. Accidental operation of lifting lever or a hydraulic failure may cause a sudden drop of the unit which may result in injury/death.

 DANGER

Following the operation, or before unhooking the implement, stop the tractor, set the brakes, disengage the PTO, lower the attached implement to the ground, shut off the engine, remove the ignition key and wait for all moving parts to stop.

 WARNING

Make sure all parked machines are on a hard, level surface and engage all safety devices.

 CAUTION

Place support blocks under implement as needed to prevent the unit from tipping over onto a child and/or an adult. An implement that tips over can result in injury or death.

 CAUTION

Store the unit in an area away from human activity.

1. SAFETY LABELS

The safety labels applied on the machine give fundamental information for using the machine safely.

Make sure safety labels are in good conditions. If pictograms are worn, they must be replaced with others obtained from the manufacturer and placed in the position indicated by this manual.

Make sure the safety labels are legible. If necessary, wipe them by a cloth, with soap and water.

5.1. STARTUP

Before the startup and before each use, perform the following pre-operation inspections and service of the implement:

- Check that the implement has no damaged functional parts and has all mechanical parts in good condition. Repair and / or replace the damaged parts;
- check that the implement has no missing parts (pins, safety pins, plugs oil ...). Restore the missing parts;
- check that all guards and safety devices have no damages and are properly positioned. Repair and / or replace the damaged shields, restore the correct position;
- verify that the PTO driveshaft is properly installed (see section: Connection of the drive shaft);
- check that the driveshaft clutch is in good condition, and that its components are not subject to "sticking" (see section: Maintenance / Driveline);
- check the presence of lubricant in all greasing points of the implement (driveshaft, supports...)
- Check for oil leaks from the gearbox or the transmission side cover. Identify the reason of loss, then repair and / or replace the damaged components;
- check the correct oil level in the gearboxes
- check that blades are not excessively worn and the relating hardware is correctly tightened
- check that all hardware (nuts, bolts, etc.) are properly tightened.
- check that all safety decals are correctly positioned, in good condition and legible. Replace any damaged decals;
- check that there is no constraints that may prevent the movement of equipment. Remove any constraint.

Before the startup and before each use, make the following checks on the operating area you intend to operate:

- check that area is clear of foreign objects (rocks, branches or debris). Remove any obstacle and visibly highlight obstacles that cannot be removed (e.g. with flags);
- make sure that in the area you intend to operate there are no people or animals;
- make sure the soil to be worked is not too grassy, muddy, sandy or rocky.

WARNING

Before conducting the above inspections and service, make sure the tractor engine is off, all rotation parts are completely stopped and the tractor is in park with the parking brake

engaged. Make sure the implement is resting on the ground or securely blocked up and the tractor lifting hydraulics locked.

Once all the checks above have been done, start the tractor and the implement as follows:

- start the tractor and engage the tractor PTO at low rpm, making sure that the implement is NOT in the raised position but close to the ground, then increase speed engine until to 540 or 1000 rpm (dependent on which size model you have purchased)
- lower the implement on the ground and simultaneously start driving the tractor forward at low speed. Subsequently, increase the ground speed depending on ground conditions;
- If the outside temperature is very cold, it's recommended to engage the PTO and have the implement operate at low speed (with the tractor stationary) to warm oil and lubricate parts;
- Drive for a while operating the implement then stop the tractor to check the quality of the work performed. If you need to get off the tractor, reduce engine speed and disengage PTO, set the parking brake, stop engine and remove the ignition key.

Introduction

Your Sabre Slasher has been designed to do a range of work to your satisfaction. This list of instructions covers the basic requirements for maintenance and will ensure good service if carried out.

Cautionary Advice

Special safety features are incorporated in the design of this machine for your protection but careless operation can still cause damage or injury.



DON'T let familiarity trap you into danger.

DON'T attempt to clear away any obstruction whatever while the machine is operating or spinning to a stop.

KEEP WELL AWAY from machine if cutter is spinning.

SPECTATORS (particularly children) must be kept well away while machine is operating as sticks and stones can fly further than thought.

MAKE REGULAR INSPECTION of the cutter assembly for fracture and be sure that flails and flail plate are securely attached. Replace if any irregularity or excessive wear shows.

Fitting to the Tractor

The mower is attached to the tractor three point linkage in normal manner. The telescopic drive shaft can then be fitted.

Fit stabiliser bars or chain.

Fit the drive shaft securely to the tractor P.T.O. and gearbox input shaft. Ensure that both splined yokes are securely fastened to the splined shaft on both the tractor and the mower.

See notes on drive shaft.

Important Notes

CORRECT SET-UP OF 'FLOATING TOP LINK' SLOT / CONNECTION TO TRACTOR:

- 1) Once the machine is connected to the tractor, set the tractor and machine down on flat ground (preferably concrete)
- 2) Lift the lower link arms slightly to just take the weight of the front of the machine (i.e. the front of the skids would be 5mm off the ground). If machine fitted with front wheels or rollers these should be set to just run on the ground.
- 3) Set the lower link draft arms of the tractor at this position so they cannot go lower than this, and ensure they can float. (I.e. not fixed)

- 4) At this point, set the top link into the centre of the top link slot (not the hole)
- 5) Ensure the fixed top link hole is only ever used during transport of the machine.

Following this correct procedure will ensure:

- A good even cutting finish
- Reduce the possibility of scalping or digging in
- Extended wearing life of the side skids
- Machine construction is relieved of undue stresses

Failure to set up as above can result in serious damage to the machine caused by tractor weight transferring to headstock and chassis which is **NOT** covered by the warranty.

Before commencing work you will want to adjust the height of the cut. With your FIELDMASTER SABRE Series there are numerous cutting heights to achieve the optimum desired length of cut to prevent scalping and give an even and accurate cut. N.B. Machine is designed / factory set with correct 'lean-in' angle (blade tip lower at front than rear) for efficient cutting and discharge.

Simple adjustment is carried out by removing the bolts on the side of the skids and relocating them once the skids have been raised or lowered.

There are three basic ways to adjust the height of the cut:

- 1) By adjusting the skids in relation to mowing deck;
- 2) By adjusting the rear roller or wheels in relation to the mowing deck and skids; (if fitted)
- 3) By adjusting both the roller assembly or wheels separately (if fitted) in relation to the mowing deck to give a wide range of roller-to-skids positioning in conjunction with altering the height of cut.

It is important to set your FIELDMASTER SABRE up correctly for mowing according to the ground conditions.

Firstly, in the optimum flat field mowing the FIELDMASTER should be used on the roller only with the skids approximately one inch higher above the roller to give stability on any slight unevenness and to avoid any undue lateral roll of the machine at higher speeds.

Secondly, where mowing conditions are not ideal, it is important that the skids are set at approximately the same height as the roller when fitted.

Thirdly, in more extreme undulations and rougher ground it is best to have the roller (where fitted) about one inch above the skids.

These three setting positions for three different types of mowing applications have proved to be the most satisfactory.

There are other points which could be mentioned, such as wet conditions where it's important that the roller takes most of the weight of the machine rather than the skid to

avoid skid marks and also in very dry conditions if the ground is reasonable skid wear can be reduced with more pressure on the roller. However, individual conditions and varying operators will find success sometimes in the varying of these conditions. A finer adjustment can be achieved by lengthening or shortening the tractor top link arm.

It is important that the top link arm is adjusted so that the skid runners are running parallel with the ground. This will automatically give the mowing deck approximately 3/4" (19mm) 'lead-in' required for good mowing. This check should be made with tractor and mower on level surfaces with mower in cutting position.

The best cutting performance will be gained when operating at 540 RPM is maintained.

The Telescopic Drive Shaft

There is a wide range of tractors and the horizontal distance between the power take off shaft and the drawbar varies considerably. A specific instruction for each would require extensive research. However, taking for example the minimum and maximum conditions, safe working lengths of the drive shaft are as follows:

Once the shaft is fitted to the machine or tractor a simple test should be carried out. On raising and lowering the machine fully on the linkage arm, at no point of time should the P.T.O. shaft be fully compressed. During the raise and lowering travel, when the P.T.O. shaft is at the shortest length, allowance should be made for the shaft to compress a further 40mm, but taking care that the shaft is not cut too short so that at the longest point during travel has still got at least 100mm of contact with both inner and outer tubes.

Ensure that both splined yokes are securely fastened to the splined shafts on both the tractor P.T.O. and mower gearbox input shaft.

Routine Lubrication and Maintenance



1) Grease the sliding shaft and tube of the driveshaft every 20 working hours. The shaft should be pulled apart to ensure sufficient application of grease.

2) Grease the driveshaft cross and bearings every 10 working hours.

3) Check gearbox oil before use every time. Top up with EP 90 extreme pressure or alternative.



Points to Remember

- 1) Fast forward speed leaves longer stubble. The slower the speed, the better the finish.
- 2) Maintain skids parallel to each other by always adjusting bolts to same height holes each side.
- 3) High P.T.O. revs. will slightly lift blades, which will cut higher than expected.

- 4) Best performances from your Sabre Slasher will be gained when the P.T.O revolutions are maintained between 540 and 650 r.p.m.
- 5) Always ensure that the front of skids are in contact with the ground. Failure to do this will cause poor cut quality.

When fitting blades, special care should be taken to ensure that the genuine attaching bolt is done up tight. Blades should now be free swinging on the special hardened bush which is locked tight with the bolt.

Routine Servicing - IMPORTANT!

Like all machinery and motorcars, your FIELDMASTER must be routinely serviced and checked as follows:

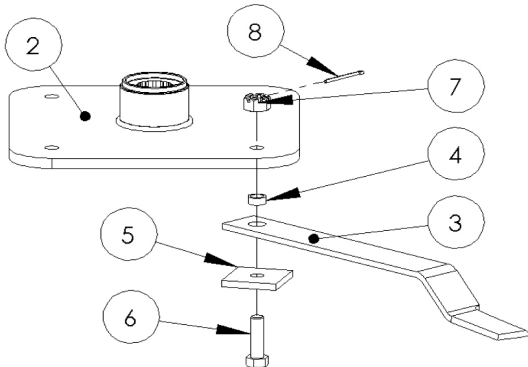
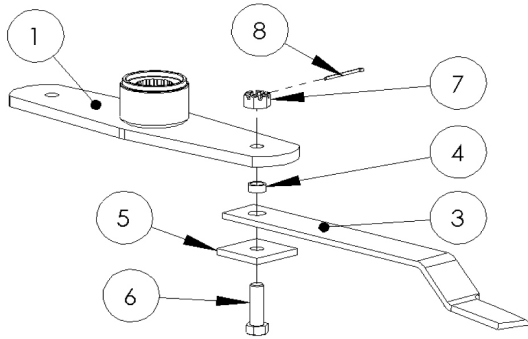
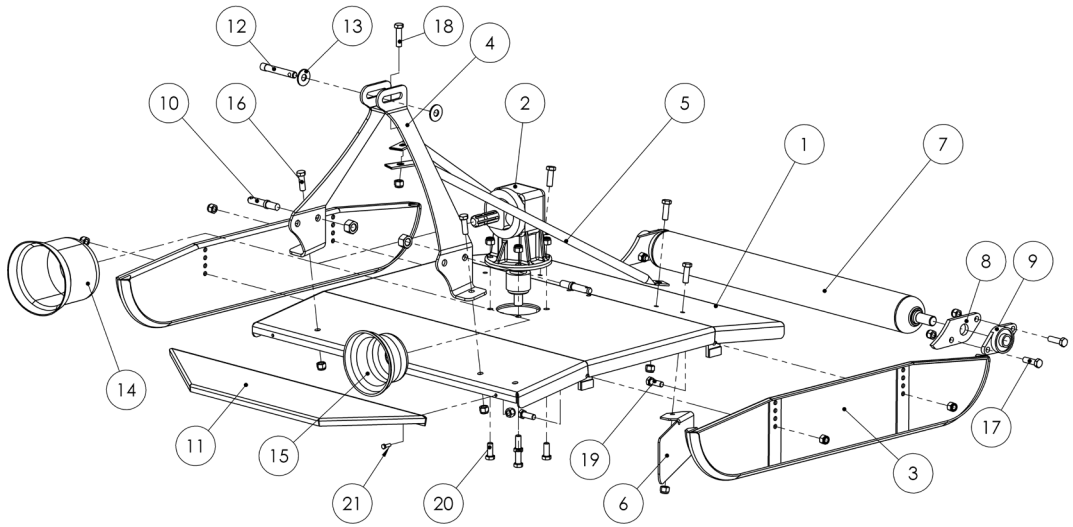
After the first 10 - 15 hours of use: check all gearbox mounting bolts. 3pt linkage bolts, skid, roller or wheel mounting bolts, check flail and cutter bolts are tight. These will tend to "bed in" after the first 10 - 15 hours and must be checked. Check all oil levels, driveshaft grease, universal joints, roller and wheel bearings. Check main hub (holding flail/blade carrier to gearbox) is tightened as this is a taper spline shaft that also takes some "bedding-in" and must be tightened.

At the end of the mowing season: we request that you call your Fieldmaster agent to have an "out of season service". This will repeat all of the above service checks along with replacement of blade tips, blade sharpening, balance check, check and or replace any worn roller bearings, wheel bearings and ensure the machine is running correctly ready for the next season. FAILURE TO ATTEND TO SERVICING AS SHOWN ABOVE WILL ONLY CAUSE PREMATURE FAILURE OF SOME COMPONENTS. THIS TYPE OF FAILURE IS NOT COVERED BY WARRANTY.

**REMEMBER!
USE OF NON GENUINE FIELDMASTER PARTS
WILL INVALIDATE WARRANTY!!**

We reserve the right to change or alter specifications without notification.

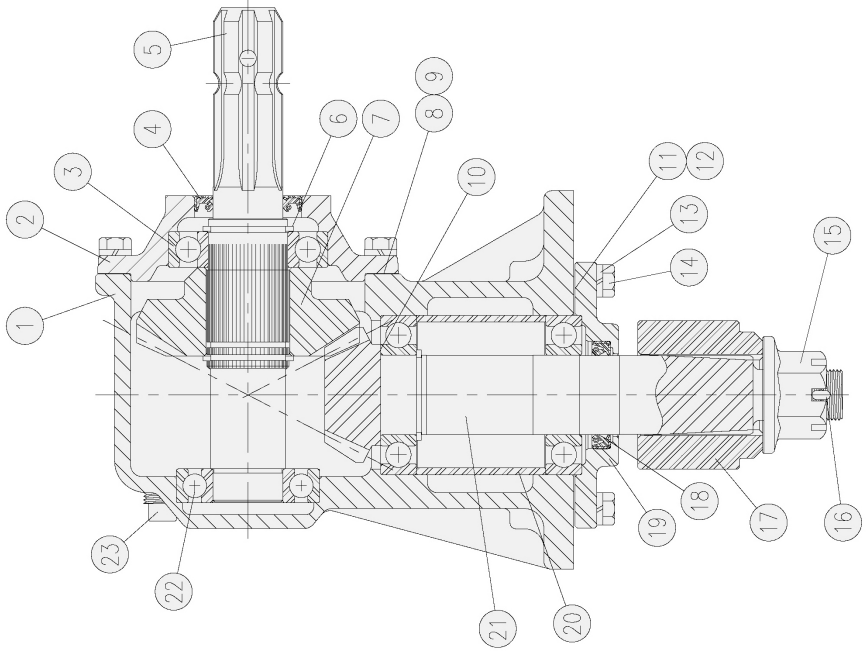
Spare Parts Diagram



ITEM NO	PART NO	DESCRIPTION	QTY
1	641200	Main Chassis (Sabre 1200)	1
	641500	Main Chassis (Sabre 1500)	1
2	01-004	Gearbox	1
3	1828.J3	Skid LH or RH (Sabre 1200)	2
	1838.J3	Skid LH or RH (Sabre 1500)	2
4	681200	Headstock	1
5	691200	Rear Stay Sabre 1200 - (1 pair)	1 pair
	691500	Rear Stay Sabre 1500 - (1 pair)	1 pair
	81230	Rear Stay Bolt, Nylock & Washer	2
6	691205	Grass Flow Vane (optional) (Sabre 1200)	1
	691505	Grass Flow Vane (optional) (Sabre 1500)	1
7	981771	Rear Roller (Optional) (Sabre 1200)	1
	98771.01	Rear Roller (Optional) (Sabre 1500)	1
8	988707	Rear Roller Bracket /Optional (1 pair)	1
9	1199B	Rear Roller Bearing only	2
	1199A	Bearing Housing	2
	1199C	Bearing Cover (obsolete)	2
10	5042	Lower Link Pin, Cat 1	2
11	147024	Front or Rear Guard 1200 (optional)	1
	147029	Front or Rear Guard 1500 (optional)	1
12	5040	Top Link Pin, Cat 1	1
13	5040.01	Washers - Top Link Pin	2
14	21904.02	PTO Cone (For Clutch Option)	1
15	21901	PTO Cone Std	1
	FST	PTO Cone Mounting Bolt M8 x 16	2
16	FST	M16 x 40 Bolt, Nylock & Washers	2
17	FST	M16 x 60 Bolt, Nylock & Washers	4
18	FST	M16 x 50 Bolt, Nylock & Washers	3
19	FST	M12 x 40 Bolt, Nylock & Washers	4
20	FST	M16 x 50 Bolt, Nylock & Washers	4
21	FST	Guard Mounting bolt/nut	

ITEM NO	PART NO	DESCRIPTION	QTY
1	1858	Blade Carrier, 2 Blade (Sabre 1200 & 1500)	1
2	1868	Blade Carrier, 4 Blade (Sabre 1200 & 1500)	1
3	1572	Flail Sabre 1200 (65 x 10 x 440)	2 or 4
	1567	Flail Sabre 1500 (65 x 10 x 560)	2 or 4
4*	1778	Flail Bush	2 or 4
5	1849.J2	Retaining Plate	2 or 4
6*	188	Flail Bolt	2 or 4
7*	368	Castle Nut	2 or 4
8*	02-402	Split Pin	2 or 4
*	188-P	Flail Bolt Kit (2 of each items*)	

ITEM NO.	PART NO.	DESCRIPTION	QTY.
1	18-010	Housing	1
2	20-007	Input Cap	1
3	4.03.101.03	Ball Bearing 208	3
4	5.02.106.06	Input Seal	1
5	02-034	Input Shaft	1
6	21-012	Retaining Ring	3
7	03-003	29 Tooth Input Gear	1
8	08-004A	Input Gasket (0.30)	VAR
9	08-004B	Input Gasket (0.13)	VAR
10	17-004	Steel Shim (0.20)	1
11	08-005A	Output Gasket (0.30)	VAR
12	08-005B	Output Gasket (0.13)	VAR
13	07-001	FST	10
14	06-008	3/8" - 16 X 1" Cap Screen	10
15	11-008	1" - 14 Slotter Flange Hex Nut	1
16	12-003	Cotter Pin	1
17	15-001	Blade Hub	1
18	5.04.105.33	Output Seal	1
19	20-003	Output Cap	1
20	10-002	Output Bearing Spacer	1
21	03-004	15 Tooth Output Sft & Pinion	1
22	4.03.104.02	Ball Bearing 207	1
23	09-002	1/2" Oil Fill Plug	1
24	09-005	1/8" Level Plug	1
N/L	A4061007	Sabre 1200 Driveshaf	
N/L	A4086007	Sabre 1500 Driveshaft	



WARRANTY

The manufacturer's obligation under this warranty is limited to correcting without charge at its factory or by one of its authorised Dealers, with the manufacturer's approval, any parts thereof, within 12 months from date of purchase by the original user, and which upon examination shall disclose to the manufacturer's satisfaction to have been originally defective.

Correction of such defect by repair to, or supplying of replacements of defective parts, shall constitute fulfillment of all obligations to the original user: Manufacturer shall not be liable for loss, damage, or expense directly or indirectly from the use of its product or from any other cause. Defective parts must be returned freight paid each way by the purchaser to the manufacturer.

This warranty shall not apply to any parts which must be replaced because of normal wear, or which have been subject to misuse, negligence or accident or which have been repaired or altered outside of the manufacturer's factory, unless authorised by the manufacture. This warranty should not be construed as a free service period during the warranty period.

To view our full list of warranty policy visit www.fieldmaster.co.nz.

FIELDMASTER®

• PREMIUM FARM EQUIPMENT •

68 Adams Drive
Pukekohe
Ph: 0800 500 275